

TURVA FLANGE

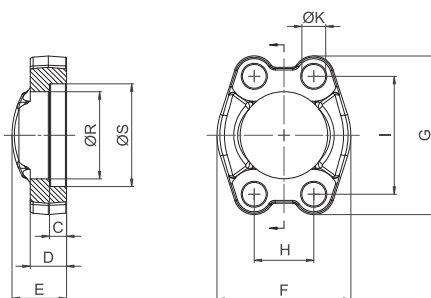
CATALOG



SAE Flange Clamp
BM

Order Codes

- * SAE Flange Clamp **BM-...**
- * Including Metric bolts 8.8, **BM-...-M-B#K**
spring rings, O-ring made of NBR (Buna-N®)
packed in kits)
- * Including Metric bolts 10.9, **BM-...-MH-B#K**
spring rings, O-ring made of NBR (Buna-N®)
packed in kits)
- * Including UNC bolts (Gr10), **BM-...-U-B#K**
spring rings, O-ring made of NBR (Buna-N®)
packed in kits)



Material S355J0 / C45 or equivalent
Surface CrVI-free
Special Material Stainless Steel 1.4404 "W5" on request

3000 PSI Standard Pressure Series (according to ISO 6162-1)

PN (bar) ¹		Nominal Size		Order Codes	Dimensions (mm)										for Bolts	
8.8 Bolts	10.9 (MH) Bolts	DN	(in)		Ø R	Ø S	C	D	E	F	G	H	I	Ø K ²	Metr.	UNC
350	350	13	1/2	BM-301	24,3	31	6,2	13	19	46	54	17,5	38,1	8,7	M8x25	5/16-18 UNC x 1-1/4
350	350	19	3/4	BM-302	32,2	38,9	6,2	14	22	52	65	22,3	47,6	10,5	M10x30	3/8-16 UNC x 1-1/4
250	315	25	1	BM-303	38,5	45,3	7,5	16	24	59	70	26,2	52,4	10,5	M10x30	3/8-16 UNC x 1-1/4
200	250	32	1-1/4	BM-304-U	43,7	51,6	7,5	14	24	73	79,5	30,2	58,7	12		7/16-14 UNC x 1-1/2
200	250	32	1-1/4	BM-304-M12	43,7	51,6	7,5	14	24	73	79,5	30,2	58,7	12,5	M12x35	
200	250	32	1-1/4	BM-304-M	43,7	51,6	7,5	14	24	73	79,5	30,2	58,7	10,5	M10x30	
200	200	38	1-1/2	BM-305	50,8	61,1	7,5	16	25	83	94	35,7	69,9	13,5	M12x35	1/2-13 UNC x 1-1/2
200	200	38	1-1/2	BM-305-M14	50,8	61,1	7,5	16	25	83	94	35,7	69,9	14,5	M14x35	
160	200	51	2	BM-306	62,8	72,3	9	16	26	97	102	42,9	77,8	13,5	M12x35	1/2-13 UNC x 1-1/2
160	200	51	2	BM-306-M14	62,8	72,3	9	16	26	97	102	42,9	77,8	14,5	M14x35	
100	160	64	2-1/2	BM-307	74,9	84,9	9	19	38	109	114,5	50,8	88,9	13,5	M12x40	1/2-13 UNC x 1-1/2
100	160	64	2-1/2	BM-307-M14	74,9	84,9	9	19	38	109	114,5	50,8	88,9	14,5	M14x40	
100	160	76	3	BM-308	90,9	102,4	9	22	41	131	135	61,9	106,4	17	M16x50	5/8-11 UNC x 2
35	35	89	3-1/2	BM-309	102,4	115,1	10,7	22	28	140	152	69,9	120,7	17	M16x50	5/8-11 UNC x 2
35	35	102	4	BM-310	115,0	127,8	10,7	25	35	152	162	77,8	130,2	17	M16x50	5/8-11 UNC x 2
35	35	127	5	BM-311	140,5	153,2	10,7	28	41	181	184	92,1	152,4	17	M16x55	5/8-11 UNC x 2

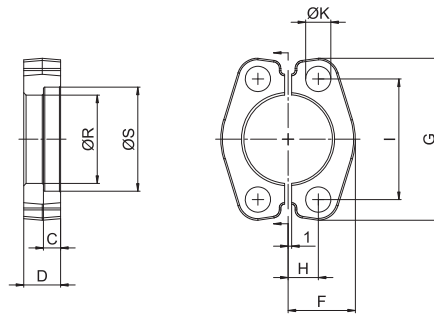
6000 PSI High Pressure Series (according to ISO 6162-2)

PN (bar) ¹		Nominal Size		Order Codes	Dimensions (mm)										for Bolts	
8.8 Bolts	10.9 (MH) Bolts	DN	(in)		Ø R	Ø S	C	D	E	F	G	H	I	Ø K ²	Metr.	UNC
350	400	13	1/2	BM-601	24,6	32,5	7,2	16	22	48	56,5	18,2	40,5	8,7	M 8x30	5/16-18 UNC x 1-1/4
350	400	19	3/4	BM-602	32,5	42	8,2	19	28	60	71	23,8	50,8	10,5	M 10x35	3/8-16 UNC x 1-1/2
350	400	25	1	BM-603-U	38,8	48,4	9	24	33	70	81	27,8	57,2	12		7/16-14 UNC x 1-3/4
350	400	25	1	BM-603-M	38,8	48,4	9	24	33	70	81	27,8	57,2	13	M 12x45	
350	400	32	1-1/4	BM-604	44,5	54,8	9,8	27	38	78	95	31,8	66,6	13,5	M 12x45	1/2-13 UNC x 1-3/4
350	400	32	1-1/4	BM-604-M14	44,5	54,8	9,8	27	38	78	95	31,8	66,6	15	M 14x45	
350	400	38	1-1/2	BM-605	51,6	64,3	12	30	43	95	113	36,5	79,3	17	M 16x55	5/8-11 UNC x 2
350	400	51	2	BM-606	67,6	80,2	12	37	52	114	133	44,5	96,8	21	M 20x70	3/4-10 UNC x 2-1/2

¹ The maximum working pressure applies only to the flange itself and depends on the bolts used (Grade 8.8 / 10.9). The actual maximum working pressure depends on the thickness and the quality of the tube used.

² Dimensions of screw holes in part different to the ISO to match both Metric and UNC screws.

SAE Split Flange Halves (Flat Style)
DB-FL



Material C60 / C55 or equivalent
Surface CrVI-free

Order Codes

- ★ Pair of SAE Split Flange Halves Flat Style) **DB-FL-...**
- ★ Including Metric bolts 8.8, **DB-FL-...-M-B#K**
spring rings, O-ring made of NBR (Buna-N®)
packed in kits)
- ★ Including Metric bolts 10.9, **DB-FL-...-MH-B#K**
spring rings, O-ring made of NBR (Buna-N®)
packed in kits)
- ★ Including UNC bolts (Gr10), **DB-FL-...-U-B#K**
spring rings, O-ring made of NBR (Buna-N®)
packed in kits)

3000 PSI Standard Pressure Series (according to ISO 6162-1)

PN (bar) ¹		Nominal Size		Order Codes	Dimensions (mm)										for Bolts	
8.8 Bolts	10.9 (MH) Bolts	DN	(in)		Ø R	Ø S	C	D	F	G	H	I	Ø K ²	Metr.	UNC	
350	350	13	1/2	DB-FL-301	24,3	31	6,2	13	22,8	54	8,75	38,1	8,7	M8x25	5/16-18 UNC x 1-1/4	
350	350	19	3/4	DB-FL-302	32,2	38,9	6,2	14	25,9	65	11,15	47,6	10,5	M10x30	3/8-16 UNC x 1-1/4	
250	315	25	1	DB-FL-303	38,5	45,3	7,5	16	29,2	70	13,1	52,4	10,5	M10x30	3/8-16 UNC x 1-1/4	
200	250	32	1-1/4	DB-FL-304-M	43,7	51,6	7,5	14	36,6	79	15,1	58,7	10,5	M10x30		
200	200	38	1-1/2	DB-FL-305	50,8	61,6	7,5	16	41,1	94	17,85	69,9	13,5	M12x35	1/2-13 UNC x 1-1/2	
160	200	51	2	DB-FL-306	62,8	72,3	9	16	48,2	102	21,45	77,8	13,5	M12x35	1/2-13 UNC x 1-1/2	
100	160	64	2-1/2	DB-FL-307	74,9	84,9	9	19	53	115	25,4	88,9	13,5	M12x40	1/2-13 UNC x 1-1/2	
100	160	76	3	DB-FL-308	90,9	102,4	9	22	64,3	135	30,95	106,4	17	M16x50	5/8-11 UNC x 1-1/2	

6000 PSI High Pressure Series (according to ISO 6162-2)

PN (bar) ¹		Nominal Size		Order Codes	Dimensions (mm)										for Bolts	
8.8 Bolts	10.9 (MH) Bolts	DN	(in)		Ø R	Ø S	C	D	F	G	H	I	Ø K ²	Metr.	UNC	
350	400	13	1/2	DB-FL-601	24,6	32,5	7,2	16	23,6	56	9,1	40,5	8,7	M8x30	5/16-18 UNC x 1-1/4	
350	400	19	3/4	DB-FL-602	32,5	42	8,2	20	30,0	71	11,9	50,8	10,5	M10x35	3/8-16 UNC x 1-1/2	
350	400	25	1	DB-FL-603-M	38,8	48,4	9	25	34,8	81	13,9	57,2	13	M12x45		
350	400	32	1-1/4	DB-FL-604-M14	44,5	54,8	9,8	27	38,6	95	15,9	66,6	15	M14x45		
350	400	38	1-1/2	DB-FL-605	51,6	64,3	12	30	47,5	113	18,25	79,3	17	M16x55	5/8-11 UNC x 2	
350	400	51	2	DB-FL-606	67,6	80,2	12	37	56,9	133	22,25	96,8	21	M20x70	3/4-10 UNC x 2-1/2	

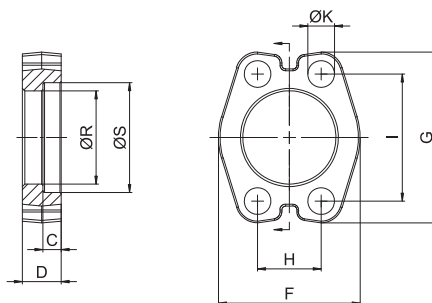
¹ The maximum working pressure applies only to the flange itself and depends on the bolts used (Grade 8.8 / 10.9). The actual maximum working pressure depends on the thickness and the quality of the tube used.

² Dimensions of screw holes in part different to the ISO to match both Metric and UNC screws.

SAE Flange Clamp (Flat Style) BM-FL

Order Codes

- * SAE Flange Clamp Flat Style **BM-FL-...**
- * Including Metric bolts 8.8, **BM-FL-...-M-B#K**
spring rings, O-ring made of NBR (Buna-N®)
(packed in kits)
- * Including UNC bolts (Gr10), **BM-FL-...-U-B#K**
spring rings, O-ring made of NBR (Buna-N®)
(packed in kits)



Material C60 / C55 or equivalent
Surface CrVI-free

3000 PSI Standard Pressure Series (according to ISO 6162-1)

PN (bar) ¹		Nominal Size		Order Codes	Dimensions (mm)									for Bolts	
8.8 Bolts	10.9 (MH) Bolts	DN	(in)		Ø R	Ø S	C	D	F	G	H	I	Ø K ²	Metr.	UNC
350	350	13	1/2	BM-FL-301	24,3	31	6,2	13	45,6	54	17,5	38,1	8,7	M8x25	5/16-18 UNC x 1-1/4
350	350	19	3/4	BM-FL-302	32,2	38,9	6,2	14	51,8	65	22,3	47,6	10,5	M10x30	3/8-16 UNC x 1-1/4
250	315	25	1	BM-FL-303	38,5	45,3	7,5	16	58,4	70	26,2	52,4	10,5	M10x30	3/8-16 UNC x 1-1/4
200	250	32	1-1/4	BM-FL-304-M	43,7	51,6	7,5	14	73,2	79	30,2	58,7	10,5	M10x30	
200	200	38	1-1/2	BM-FL-305	50,8	61,1	7,5	16	82,2	94	35,7	69,9	13,5	M12x35	1/2-13 UNC x 1-1/2
160	200	51	2	BM-FL-306	62,8	72,3	9	16	96,4	102	42,9	77,8	13,5	M12x35	1/2-13 UNC x 1-1/2
100	160	64	2-1/2	BM-FL-307	74,9	84,9	9	19	106,0	115	50,8	88,9	13,5	M12x40	1/2-13 UNC x 1-1/2
100	160	76	3	BM-FL-308	90,9	102,4	9	22	128,6	135	61,9	106,4	17	M16x50	5/8-11 UNC x 2

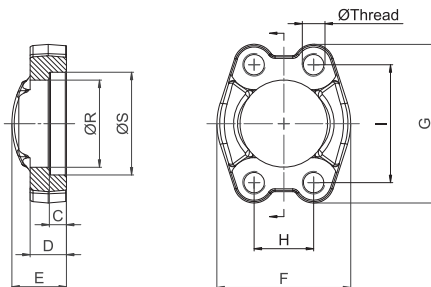
6000 PSI High Pressure Series (according to ISO 6162-2)

PN (bar) ¹		Nominal Size		Order Codes	Dimensions (mm)									for Bolts	
8.8 Bolts	10.9 (MH) Bolts	DN	(in)		Ø R	Ø S	C	D	F	G	H	I	Ø K ²	Metr.	UNC
350	400	13	1/2	BM-FL-601	24,6	32,5	7,2	16	47,2	56	18,2	40,5	8,7	M8x30	5/16-18 UNC x 1-1/4
350	400	19	3/4	BM-FL-602	32,5	42	8	20	60	71	23,8	50,8	10,5	M10x35	3/8-16 UNC x 1-1/2
350	400	25	1	BM-FL-603-M	38,8	48,4	9,0	25	69,6	81	27,8	57,2	13	M12x45	
350	400	32	1-1/4	BM-FL-604-M14	44,5	54,8	9,8	27	77,2	95	31,8	66,6	15	M14x45	
350	400	38	1-1/2	BM-FL-605	51,6	64,3	12	30	89,4	113	36,5	79,3	17	M16x55	5/8-11 UNC x 2
350	400	51	2	BM-FL-606	67,6	80,2	12	37	113,4	133	44,5	96,8	21	M20x70	3/4-10 UNC x 2-1/2

¹ The maximum working pressure applies only to the flange itself and depends on the bolts used (Grade 8.8 / 10.9). The actual maximum working pressure depends on the thickness and the quality of the tube used.

² Dimensions of screw holes in part different to the ISO to match both Metric and UNC screws.

**SAE Flange Clamp with Metric Tapped Holes
BM-G**



Material S355J0 / C45 or equivalent
Surface CrVI-free
Special Material Stainless Steel 1.4404 "-W5" on request

Order Codes

- * SAE Flange Clamp with Metric tapped holes **BM-G-...**
- * Deviant Metric tapped holes (M14) **BM-G-...M14**

3000 PSI Standard Pressure Series (according to ISO 6162-1)

PN (bar) ¹		Nominal Size		Order Codes	Dimensions (mm)									Ø Thread ²
8.8 Bolts	10.9 (MH) Bolts	DN	(in)		Ø R	Ø S	C	D	E	F	G	H	I	
350	350	13	1/2	BM-G-301	24,3	31	6,2	13	19	46	54	17,5	38,1	M8
350	350	19	3/4	BM-G-302	32,2	38,9	6,2	14	22	52	65	22,3	47,6	M10
250	315	25	1	BM-G-303	38,5	45,3	7,5	16	24	59	70	26,2	52,4	M10
200	250	32	1-1/4	BM-G-304	43,7	51,6	7,5	14	24	73	79,5	30,2	58,7	M10 (M12)
200	200	38	1-1/2	BM-G-305	50,8	61,1	7,5	16	25	83	94	35,7	69,9	M12 (M14)
160	200	51	2	BM-G-306	62,8	72,3	9	16	26	97	102	42,9	77,8	M12 (M14)
100	160	64	2-1/2	BM-G-307	74,9	84,9	9	19	38	109	114,5	50,8	88,9	M12 (M14)
100	160	76	3	BM-G-308	90,9	102,4	9	22	41	131	135	61,9	106,4	M16
35	35	89	3-1/2	BM-G-309	102,4	115,1	10,7	22	28	140	152	69,9	120,7	M16
35	35	102	4	BM-G-310	115	127,8	10,7	25	35	152	162	77,8	130,2	M16
35	35	127	5	BM-G-311	140,5	153,2	10,7	28	41	181	184	92,1	152,4	M16

6000 PSI High Pressure Series (according to ISO 6162-2)

PN (bar) ¹		Nominal Size		Order Codes	Dimensions (mm)									Ø Thread
8.8 Bolts	10.9 (MH) Bolts	DN	(in)		Ø R	Ø S	C	D	E	F	G	H	I	
350	400	13	1/2	BM-G-601	24,6	32,5	7,2	16	22	48	56,5	18,2	40,5	M8
350	400	19	3/4	BM-G-602	32,5	42	8,2	19	28	60	71	23,8	50,8	M10
350	400	25	1	BM-G-603	38,8	48,4	9	24	33	70	81	27,8	57,2	M12
350	400	32	1-1/4	BM-G-604	44,5	54,8	9,8	27	38	78	95	31,8	66,6	M12
350	400	32	1-1/4	BM-G-604-M14	44,5	54,8	9,8	27	38	78	95	31,8	66,6	M14
350	400	38	1-1/2	BM-G-605	51,6	64,3	12	30	43	95	113	36,5	79,3	M16
350	400	51	2	BM-G-606	67,6	80,2	12	37	52	114	133	44,5	96,8	M20

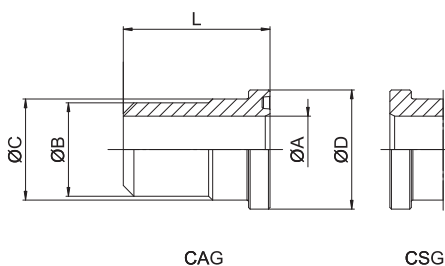
¹ The maximum working pressure applies only to the flange itself and depends on the bolts used (Grade 8.8 / 10.9). The actual maximum working pressure depends on the thickness and the quality of the tube used.

² Alternative options shown in brackets are available on request.

SAE Butt Weld Flange Adapter / SAE Butt Weld Counterflange Adapter
CAG/CSG-ST

Order Codes

- * SAE Butt Weld Flange Adapter **CAG-...-ST-**-**** without O-ring
 - * SAE Butt Weld Counterflange Adapter **CSG-...-ST-**-****
 - * Including Metric bolts 8.8, **CAG-...-ST-**-**#K** spring rings, O-ring made of NBR (Buna-N®) and DB packed in kits)
 - * Including Metric bolts 10.9, **CAG-...-ST-**-**-MH#K** spring rings, O-ring made of NBR (Buna-N®) and DB packed in kits)
 - * Including UNC bolts **CAG-...-ST-**-**-V-U-BM#K** (Gr10), spring rings, O-ring made of FPM (Viton®) and BM (packed in kits)
- **/**** Please indicate pipe-OD and pipe-ID



Material S355J0 or equivalent
Surface blank, oiled
Special Material Stainless Steel 1.4571 “-W5” on request

3000 PSI Standard Pressure Series (according to ISO 6162-1)

PN (bar) ¹		Nominal Size		Order Codes	Dimensions (mm)				
8.8 Bolts	10.9 (MH) Bolts	DN	(in)		Ø A min.	Ø B max.	Ø C	Ø D	L
350	350	13	1/2	CAG-301-ST- ** / **	12	22	24	30,2	41
350	350	19	3/4	CAG-302-ST- ** / **	13	28	31,5	38,1	50
250	315	25	1	CAG-303-ST- ** / **	19	38	38	44,45	50
200	250	32	1-1/4	CAG-304-ST- ** / **	19	42,4	43	50,8	55
200	200	38	1-1/2	CAG-305-ST- ** / **	30	50	50	60,35	57
160	200	51	2	CAG-306-ST- ** / **	38	61	62	71,4	57
100	160	64	2-1/2	CAG-307-ST- ** / **	47	74	74	84,1	58
100	160	76	3	CAG-308-ST- ** / **	58	90	90	101,6	60
35	35	89	3-1/2	CAG-309-ST- ** / **	73	100	102	114,3	80
35	35	102	4	CAG-310-ST- ** / **	97	114	114	127	80
35	35	127	5	CAG-311-ST- ** / **	120	140	140	152,4	80

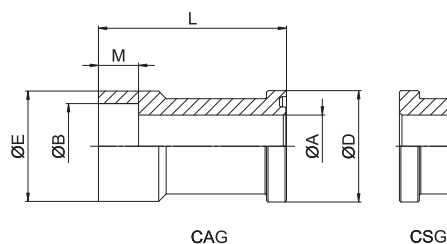
6000 PSI High Pressure Series (according to ISO 6162-2)

PN (bar) ¹		Nominal Size		Order Codes	Dimensions (mm)				
8.8 Bolts	10.9 (MH) Bolts	DN	(in)		Ø A min.	Ø B max.	Ø C	Ø D	L
350	400	13	1/2	CAG-601-ST- ** / **	10	22	24	31,8	34
350	400	19	3/4	CAG-602-ST- ** / **	12	28	32	41,3	38
350	400	25	1	CAG-603-ST- ** / **	18	38	38	47,6	40
350	400	32	1-1/4	CAG-604-ST- ** / ** ²	19	42,4	44	54	45
350	400	38	1-1/2	CAG-605-ST- ** / **	28	51	51	63,5	50
350	400	51	2	CAG-606-ST- ** / **	32	61	67	79,4	58

¹ The maximum working pressure applies only to the flange itself and depends on the bolts used (Grade 8.8 / 10.9). The actual maximum working pressure depends on the thickness and the quality of the tube used.

² According to ISO 6162-2 bolts M12 should be used but because usually bolts M14 are used the description of the complete part must show M14 (e.g. CAG-604-ST-**-**/**-M14#K).

SAE Socket Weld Flange Adapter / SAE Socket Weld Counterflange Adapter CAG/CSG-ES



Order Codes

- * SAE Socket Weld Flange Adapter without O-ring **CAG-...-ES-...**
- * SAE Socket Weld Counterflange Adapter **CSG-...-ES-...**
- * Including Metric bolts 8.8, spring rings, O-ring made of NBR (Buna-N®) and DB packed in kits **CAG-...-ES-...#K**
- * Including Metric bolts 10.9, spring rings, O-ring made of NBR (Buna-N®) and DB packed in kits **CAG-...-ES-...-MH#K**
- * Including UNC bolts (Gr10), spring rings, O-ring made of FPM Viton® and DB packed in kits **CAG-...-ES-...-V-U#K**

Material S355J0 or equivalent
Surface blank, oiled
Special Material Stainless Steel 1.4571 "W5" on request

3000 PSI Standard Pressure Series (according to ISO 6162-1)

PN (bar) ¹		Nominal Size		Order Codes	Dimensions (mm)					
8.8 Bolts	10.9 (MH) Bolts	DN	(in)		Ø A	Ø B	Ø D	Ø E	M	L
350	350	13	1/2	CAG-301-ES-20,5/15	15	20,5	30,2	30	13	60
350	350	13	1/2	CAG-301-ES-21,7/15	15	21,7	30,2	30	13	60
350	350	19	3/4	CAG-302-ES-25,5/19	19	25,5	38,1	35	13	68
350	350	19	3/4	CAG-302-ES-27,3/19	19	27,3	38,1	35	13	68
250	315	25	1	CAG-303-ES-30,5/23	23	30,5	44,45	44	16	75
250	315	25	1	CAG-303-ES-34/25	25	34	44,45	44	16	75
200	250	32	1-1/4	CAG-304-ES-38,5/32	32	38,5	50,8	55	18	95
200	250	32	1-1/4	CAG-304-ES-43/32	32	43	50,8	55	18	95
200	200	38	1-1/2	CAG-305-ES-49/38	38	49	60,3	63	20	100
200	200	38	1-1/2	CAG-305-ES-50,4/38	38	50,4	60,3	63	20	100
160	200	51	2	CAG-306-ES-61/50	50	61	71,4	79	22	107
100	160	64	2-1/2	CAG-307-ES-77/58	58	77	84,1	98	24	130
100	160	76	3	CAG-308-ES-90,5/70	70	90,5	101,6	116	28	150

6000 PSI High Pressure Series (according to ISO 6162-2)

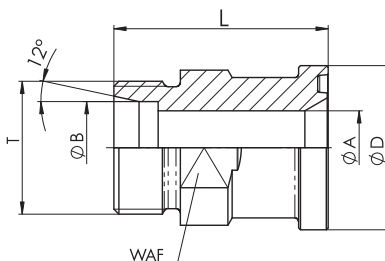
PN (bar) ¹		Nominal Size		Order Codes	Dimensions (mm)					
8.8 Bolts	10.9 (MH) Bolts	DN	(in)		Ø A	Ø B	Ø D	Ø E	M	L
350	400	13	1/2	CAG-601-ES-20,5/15	20,5	15	31,8	32	13	60
350	400	13	1/2	CAG-601-ES-21,7/15	21,7	15	31,8	32	13	60
350	400	19	3/4	CAG-602-ES-25,7/19	25,7	19	41,3	40	13	68
350	400	19	3/4	CAG-602-ES-27,3/19	27,3	19	41,3	40	13	68
350	400	25	1	CAG-603-ES-34/25	34,0	25	47,6	48	16	75

¹ The maximum working pressure applies only to the flange itself and depends on the bolts used (Grade 8.8 / 10.9). The actual maximum working pressure depends on the thickness and the quality of the tube used.

SAE Flange Adapter with 24° Cone Connector (acc. to ISO 8434-1 / DIN 2353) CAG-L/S

Order Codes

- ★ SAE Flange Adapter with 24° cone connector acc. to ISO 8434-1 / DIN 2353) without O-ring) **CAG-...**
- ★ Including Metric bolts 8.8, spring rings, O-ring made of NBR (Buna-N®) and DB packed in kits) **CAG-...#K**
- ★ Including Metric bolts 10.9, spring rings, O-ring made of NBR (Buna-N®) and DB packed in kits) **CAG-...-MH#K**
- ★ Including , UNC bolts (Gr10), spring rings, O-ring made of FPM (Viton®) and DB packed in kits) **CAG-...-V-U#K**



Material S355J0 or equivalent
Surface CrVI-free
Special Material Stainless Steel 1.4571 "W5" on request

3000 PSI Standard Pressure Series (according to ISO 6162-1)

PN (bar) ¹		Nominal Size		Order Codes	Dimensions (mm)					
8.8 Bolts	10.9 (MH) Bolts	DN	(in)		Ø A	Ø B x Series	Ø D	L	WAF	T (Metric)
350	350	13	1/2	CAG-301-L15	12	15 L	30,2	48	24	22x1,5
350	350	13	1/2	CAG-301-S16	12	16 S	30,2	50	24	24x1,5
350	350	19	3/4	CAG-302-L18	15	18 L	38,1	53	30	26x1,5
350	350	19	3/4	CAG-302-S20	16	20 S	38,1	57	30	30x2
350	350	19	3/4	CAG-302-L22	19	22 L	38,1	53	30	30x2
350	350	19	3/4	CAG-302-S25	17	25 S	38,1	57	30	36x2
350	350	19	3/4	CAG-302-L28	19	28 L	38,1	53	30	36x2
250	315	25	1	CAG-303-S25	20	25 S	44,45	58	36	36x2
250	315	25	1	CAG-303-L28	24	28 L	44,45	54	36	36x2
250	315	25	1	CAG-303-S30	24	30 S	44,45	63	36	42x2
200	250	32	1-1/4	CAG-304-S25	20	25 S	50,8	60	41	36x2
200	250	32	1-1/4	CAG-304-L28	22	28 L	50,8	59	41	36x2
200	250	32	1-1/4	CAG-304-S30	25	30 S	50,8	62	41	42x2
200	250	32	1-1/4	CAG-304-L35	30	35 L	50,8	58	41	45x2
200	250	32	1-1/4	CAG-304-S38	28	38 S	50,8	67	46	52x2
200	200	38	1-1/2	CAG-305-S38	32	38 S	60,35	70	46	52x2
200	200	38	1-1/2	CAG-305-L42	36	42 L	60,35	64	46	52x2

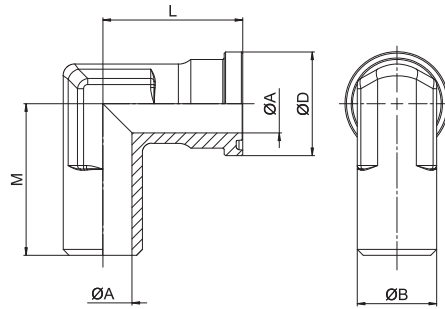
6000 PSI High Pressure Series (according to ISO 6162-2)

PN (bar) ¹		Nominal Size		Order Codes	Dimensions (mm)					
8.8 Bolts	10.9 (MH) Bolts	DN	(in)		Ø A	Ø B x Series	Ø D	L	WAF	T (Metric)
350	400	13	1/2	CAG-601-S16	12	16 S	31,8	53	24	24x1,5
350	400	19	3/4	CAG-602-S16	12	16 S	41,3	59	30	24x1,5
350	400	19	3/4	CAG-602-S20	16	20 S	41,3	61	30	30x2
350	400	19	3/4	CAG-602-S25	17	25 S	41,3	63	30	36x2
350	400	19	3/4	CAG-602-S30	18	30 S	41,3	64	36	42x2
350	400	25	1	CAG-603-S25	20	25 S	47,6	72	36	36x2
350	400	25	1	CAG-603-S30	24	30 S	47,6	74	36	42x2
350	400	32	1-1/4	CAG-604-S30 ²	25	30 S	54	79	41	42x2
350	400	32	1-1/4	CAG-604-S38 ²	30	38 S	54	83	46	52x2
350	400	38	1-1/2	CAG-605-S38	30	38 S	63,5	89	46	52x2

¹ The maximum working pressure applies only to the flange itself and depends on the bolts used (Grade 8.8 / 10.9). The actual maximum working pressure depends on the thickness and the quality of the tube used.

² According to ISO 6162-2 bolts M12 should be used but because usually bolts M14 are used the description of the complete part must show M14 (e.g. CAG-604-S30-M14#K).

SAE 90° Butt Weld Flange Adapter CAG90-ST



Order Codes

- * SAE 90° Butt Weld Flange Adapter **CAG90-...-ST-...** without O-ring)
- * Including Metric bolts 8.8, spring **CAG90-...-ST-...#K** rings, O-ring made of NBR Buna-N®) and DB packed in kits)
- * Including Metric bolts 10.9, **CAG90-...-ST-...-MH#K** spring rings, O-ring made of NBR Buna-N®) and DB packed in kits)
- * Including UNC bolts Gr10), **CAG90-...-ST-...-V-U#K** spring rings, O-ring made of FPM Viton®) and DB packed in kits)

Material S355J0 or equivalent
Surface blank, oiled
Special Material Stainless Steel 1.4404 "-W5" on request

3000 PSI Standard Pressure Series (according to ISO 6162-1)

PN (bar) ¹		Nominal Size		Order Codes	Dimensions (mm)				
8.8 Bolts	10.9 (MH) Bolts	DN	(in)		Ø A	Ø B	D	L	M
350	350	13	1/2	CAG90-301-ST-15/11	11	15	30,2	39	38
350	350	13	1/2	CAG90-301-ST-16/12	12	16	30,2	39	38
350	350	13	1/2	CAG90-301-ST-21,3/14	14	21,3	30,2	39	38
350	350	19	3/4	CAG90-302-ST-18/15	15	18	38,1	42	45
350	350	19	3/4	CAG90-302-ST-20/14	14	20	38,1	42	45
350	350	19	3/4	CAG90-302-ST-22/16	16	22	38,1	42	45
350	350	19	3/4	CAG90-302-ST-26,9/19	19	26,9	38,1	42	45
250	315	25	1	CAG90-303-ST-25/19	19	25	44,45	45	50
250	315	25	1	CAG90-303-ST-30/22	22	30	44,45	45	50
250	315	25	1	CAG90-303-ST-33,7/25	25	33,7	44,45	45	50
200	250	32	1-1/4	CAG90-304-ST-25/19	19	25	50,8	50	59
200	250	32	1-1/4	CAG90-304-ST-30/22	22	30	50,8	50	59
200	250	32	1-1/4	CAG90-304-ST-35/31	31	35	50,8	50	59
200	250	32	1-1/4	CAG90-304-ST-38/28	28	38	50,8	50	59
200	250	32	1-1/4	CAG90-304-ST-42,4/32	32	42,4	50,8	50	59
200	200	38	1-1/2	CAG90-305-ST-38/28	28	38	60,35	76	56
200	200	38	1-1/2	CAG90-305-ST-42/36	36	42	60,35	76	56
200	200	38	1-1/2	CAG90-305-ST-48,3/38	38	48,3	60,35	76	56

6000 PSI High Pressure Series (according to ISO 6162-2)

PN (bar) ¹		Nominal Size		Order Codes	Dimensions (mm)				
8.8 Bolts	10.9 (MH) Bolts	DN	(in)		Ø A	Ø B	D	L	M
350	400	13	1/2	CAG90-601-ST-16/10	10	16	31,8	39	38
350	400	13	1/2	CAG90-601-ST-21,3/12	12	21,3	31,8	39	38
350	400	19	3/4	CAG90-602-ST-16/10	10	16	41,3	48	48
350	400	19	3/4	CAG90-602-ST-20/12	12	20	41,2	48	48
350	400	19	3/4	CAG90-602-ST-25/17	17	25	41,3	48	48
350	400	19	3/4	CAG90-602-ST-26,9/16	16	26,9	41,3	48	48
350	400	25	1	CAG90-603-ST-25/17	17	25	47,6	60	60
350	400	25	1	CAG90-603-ST-30/22	22	30	47,6	60	60
350	400	25	1	CAG90-603-ST-33,7/25	25	33,7	47,6	60	60
350	400	25	1	CAG90-603-ST-33,7/21	21	33,7	47,6	60	60
350	400	32	1-1/4	CAG90-604-ST-30/22 ²	22	30	54	68	68
350	400	32	1-1/4	CAG90-604-ST-38/28 ²	28	38	54	68	68
350	400	32	1-1/4	CAG90-604-ST-42,4/30 ²	30	42,4	54	68	68
350	400	32	1-1/4	CAG90-604-ST-38/22 ²	22	38	54	68	68
350	400	38	1-1/2	CAG90-605-ST-38/28	28	38	63,5	76	76
350	400	38	1-1/2	CAG90-605-ST-38/22	22	38	63,5	76	76
350	400	38	1-1/2	CAG90-605-ST-48,3/34	34	48,3	63,6	76	76
350	400	38	1-1/2	CAG90-605-ST-48,3/32	32	48,3	63,5	76	76

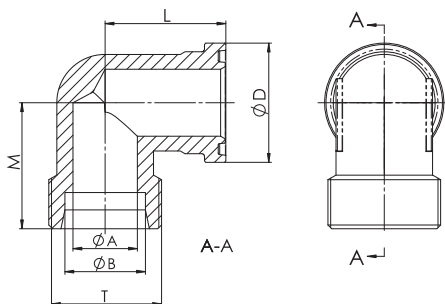
¹ The maximum working pressure applies only to the flange itself and depends on the bolts used (Grade 8.8 / 10.9). The actual maximum working pressure depends on the thickness and the quality of the tube used.

² According to ISO 6162-2 bolts M12 should be used but because usually bolts M14 are used the description of the complete part must show M14 (CAG90-604-ST-30/22-M14#K).

**SAE 90° Flange Adapter with 24° Cone Connector (ISO 8434-1/DIN 2353)
CAG90-L/S**

Order Codes

- ★ SAE 90° Flange Adapter with 24° cone connector acc. to ISO 8434-1 / DIN 2353) without O-ring) **CAG90-...**
- ★ Including Metric bolts 8.8, spring rings, O-ring made of NBR (Buna-N®) and DB (packed in kits) **CAG90-...#K**
- ★ Including Metric bolts 10.9, spring rings, O-ring made of NBR (Buna-N®) and DB (packed in kits) **CAG90-...-MH#K**
- ★ Including UNC bolts (Gr10), spring rings, O-ring made of FPM (Viton®) and DB (packed in kits) **CAG90-...-V-U#K**



Material S355J0 or equivalent
Surface CrVI-free
Special Material Stainless Steel 1.4404 "W5" on request

3000 PSI Standard Pressure Series (according to ISO 6162-1)

PN (bar) ¹		Nominal Size		Order Codes	Dimensions (mm)					
8.8 Bolts	10.9 (MH) Bolts	DN	(in)		Ø A	Ø B x Series	Ø D	L	M	T (Metric)
350	350	13	1/2	CAG90-301-L15	12	15 L	30,2	39	36	22x1,5
350	350	13	1/2	CAG90-301-S16	12	16 S	30,2	39	38	24x1,5
350	350	19	3/4	CAG90-302-L18	15	18 L	38,1	42	39	26x1,5
350	350	19	3/4	CAG90-302-S20	16	20 S	38,1	42	43	30x2
350	350	19	3/4	CAG90-302-L22	19	22 L	38,1	42	41	30x2
350	350	19	3/4	CAG90-302-S25	17	25 S	38,1	42	45	36x2
250	315	25	1	CAG90-303-S25	20	25 S	44,45	45	48,5	36x2
250	315	25	1	CAG90-303-L28	24	28 L	44,45	45	45,5	36x2
250	315	25	1	CAG90-303-S30	24	30 S	44,45	45	50	42x2
200	250	32	1-1/4	CAG90-304-S25	20	25 S	50,8	50	55	36x2
200	250	32	1-1/4	CAG90-304-S30	25	30 S	50,8	50	57	42x2
200	250	32	1-1/4	CAG90-304-L35	30	35 L	50,8	50	57	45x2
200	250	32	1-1/4	CAG90-304-S38	28	38 S	50,8	50	59	52x2
200	200	38	1-1/2	CAG90-305-S38	32	38 S	60,35	55	64	52x2
200	200	38	1-1/2	CAG90-305-L42	36	42 L	60,35	55	58	52x2

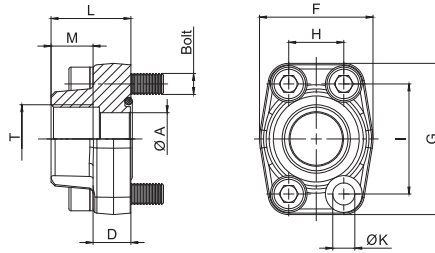
6000 PSI High Pressure Series (according to ISO 6162-2)

PN (bar) ¹		Nominal Size		Order Codes	Dimensions (mm)					
8.8 Bolts	10.9 (MH) Bolts	DN	(in)		Ø A	Ø B x Series	Ø D	L	M	T (Metric)
350	400	13	1/2	CAG90-601-S16	12	16 S	31,8	39	37,9	24x1,5
350	400	19	3/4	CAG90-602-S16	12	16 S	41,3	48	45	24x1,5
350	400	19	3/4	CAG90-602-S20	16	20 S	41,3	48	46	30x2
350	400	19	3/4	CAG90-602-S25	17	25 S	41,3	48	48	36x2
350	400	25	1	CAG90-603-S25	20	25 S	47,6	60	53	36x2
350	400	25	1	CAG90-603-S30	24	30 S	47,6	60	55	42x2
350	400	32	1-1/4	CAG90-604-S30 ²	25	30 S	54	68	58	42x2
350	400	32	1-1/4	CAG90-604-S38 ²	30	38 S	54	68	61	52x2
350	400	38	1-1/2	CAG90-605-S30	25	30 S	63,5	76	72	42x2
350	400	38	1-1/2	CAG90-605-S38	30	38 S	63,5	76	72	52x2

¹ The maximum working pressure applies only to the flange itself and depends on the bolts used (Grade 8.8 / 10.9). The actual maximum working pressure depends on the thickness and the quality of the tube used.

² According to ISO 6162-2 bolts M12 should be used but because usually bolts M14 are used the description of the complete part must show M14 (e.g. CAG90-604-S30-M14#K).

**SAE Single-Part Screw-in BSPP Threaded Flange
BFX-G**



Order Codes

- ★ SAE Single-Part Screw-in BSPP Threaded Flange without O-ring **BFX-...-G**
- ★ Deviant screw-in BSPP thread, including Metric bolts 8.8, spring rings, O-ring made of NBR Buna-N® packed in kits **BFX-...-G*** #K**
- ★ Deviant screw-in BSPP thread, including Metric bolts 10.9, spring rings, O-ring made of NBR Buna-N® packed in kits **BFX-...-G***-MH#K**
- ★ Including UNC bolts Gr10), spring rings, O-ring made of FPM Viton® packed in kits **BFX-...-G-V-U#K**

Material S355J0 or equivalent
Surface blank, oiled
Special Material Stainless Steel 1.4404 " -W5" on request

3000 PSI Standard Pressure Series (according to ISO 6162-1)

PN (bar) ¹		Nominal Size		Order Codes	Dimensions (mm)											for Bolts	
8.8 Bolts	10.9 (MH) Bolts	DN	(in)		Ø A	D	F	G	H	I	L	M	T (BSPP)	Ø K ³	Metr. ³	UNC	
350	350	13	1/2	BFX-301-G	13	16,0	47	57	17,5	38,1	36	15	1/2	8,7	M8x30	5/16-18 UNC x 1-1/4	
350	350	13	1/2	BFX-301-G038	13	16,0	47	57	17,5	38,1	36	20	3/8	8,7	M8x30	5/16-18 UNC x 1-1/4	
350	350	19	3/4	BFX-302-G	19	18,0	50	67	22,3	47,6	36	18	3/4	10,5	M10x35	3/8-16 UNC x 1-1/2	
350	350	19	3/4	BFX-302-G012	13	18,0	50	67	22,3	47,6	36	15	1/2	10,5	M10x35	3/8-16 UNC x 1-1/2	
250	315	25	1	BFX-303-G	25	18,0	54	72	26,2	52,4	38	20	1	10,5	M10x35	3/8-16 UNC x 1-1/2	
250	315	25	1	BFX-303-G034	19	18,0	54	72	26,2	52,4	38	18	3/4	10,5	M10x35	3/8-16 UNC x 1-1/2	
200	250	32	1-1/4	BFX-304-G	31	21,0	68	82	30,2	58,7	41	22	1-1/4	11,7 (13,5)	M10x40 (M12x40)	7/16-14 UNC x 1-1/2	
200	250	32	1-1/4	BFX-304-G100	25	21,0	68	82	30,2	58,7	41	20	1	11,7 (13,5)	M10x40 (M12x40)	7/16-14 UNC x 1-1/2	
200	200	38	1-1/2	BFX-305-G	38	25,0	79	96	35,7	69,9	44	24	1-1/2	13,5 (14,5)	M12x45 (M14x45)	1/2-13 UNC x 1-3/4	
200	200	38	1-1/2	BFX-305-G114	31	25,0	79	96	35,7	69,9	44	22	1-1/4	13,5 (14,5)	M12x45 (M14x45)	1/2-13 UNC x 1-3/4	
160	200	51	2	BFX-306-G	50	25,5	88	102	42,9	77,8	45	26	2	13,5 (14,5)	M12x45 (M14x45)	1/2-13 UNC x 1-3/4	
160	200	51	2	BFX-306-G112	38	25,5	88	102	42,9	77,8	45	24	1-1/2	13,5 (14,5)	M12x45 (M14x45)	1/2-13 UNC x 1-3/4	
100	160	64	2-1/2	BFX-307-G	63	26,0	101	115	50,8	88,9	50	30	2-1/2	13,5 (14,5)	M12x45 (M14x45)	1/2-13 UNC x 1-3/4	
100	160	64	2-1/2	BFX-307-G200	50	26,0	101	115	50,8	88,9	50	26	2	13,5 (14,5)	M12x45 (M14x45)	1/2-13 UNC x 1-3/4	
100	160	76	3	BFX-308-G	73	27,5	127	137	61,9	106,4	50	30	3	17,0	M16x50	5/8-11 UNC x 2	
100	160	76	3	BFX-308-G212	63	27,5	127	137	61,9	106,4	50	30	2-1/2	17,0	M16x50	5/8-11 UNC x 2	
35	35	89	3-1/2	BFX-309-G	89	27,5	138	155	69,8	120,7	50	30	3-1/2	17,0	M16x50	5/8-11 UNC x 2	
35	35	102	4	BFX-310-G	99	27,5	147	163	77,8	130,2	50	30	4	17,0	M16x50	5/8-11 UNC x 2	
35	35	127	5	BFX-311-G	120	28,0	180	184	92,0	152,4	50	30	5	17,0	M16x55	5/8-11 UNC x 2-1/4	

6000 PSI High Pressure Series (according to ISO 6162-2)

PN (bar) ¹		Nominal Size		Order Codes	Dimensions (mm)											for Bolts	
8.8 Bolts	10.9 (MH) Bolts	DN	(in)		Ø A	D	F	G	H	I	L	M	T (BSPP)	Ø K ³	Metr.	UNC	
350	400	13	1/2	BFX-601-G	13	16,5	47	57	18,2	40,5	36	15	1/2	8,7	M8x30	5/16-18 UNC x 1-1/4	
350	400	13	1/2	BFX-601-G038	14	16,5	47	57	18,2	40,5	36	20	3/8	8,7	M8x30	5/16-18 UNC x 1-1/4	
350	400	19	3/4	BFX-602-G	19	19,5	54	72	23,8	50,8	36	18	3/4	10,5	M10x35	3/8-16 UNC x 1-1/2	
350	400	19	3/4	BFX-602-G012	14	19,5	54	72	23,8	50,8	36	15	1/2	10,5	M10x35	3/8-16 UNC x 1-1/2	
350	400	25	1	BFX-603-G	25	24,5	68	82	27,8	57,2	44	20	1	13,0	M12x45	7/16-14 UNC x 1-3/4	
350	400	25	1	BFX-603-G034	19	24,5	68	82	27,8	57,2	44	18	3/4	13,0	M12x45	7/16-14 UNC x 1-3/4	
350	400	32	1-1/4	BFX-604-G	31	27,5	79	95	31,6	66,6	44	22	1-1/4	13,5	M12x45	1/2-13 UNC x 1-3/4	
350	400	32	1-1/4	BFX-604-G-M14	31	27,5	79	95	31,6	66,6	44	22	1-1/4	15,0	M14x45		
350	400	32	1-1/4	BFX-604-G100	25	27,5	79	95	31,6	66,6	44	20	1	13,5	M12x45	1/2-13 UNC x 1-3/4	
350	400	32	1-1/4	BFX-604-G100-M14	25	27,5	79	95	31,6	66,6	44	20	1	15,0	M14x45		
350	400	38	1-1/2	BFX-605-G	38	31,0	88	108	36,5	79,3	51	24	1-1/2	17,0	M16x55	5/8-11 UNC x 2-1/4	
350	400	38	1-1/2	BFX-605-G114	31	31,0	88	108	36,5	79,3	51	22	1-1/4	17,0	M16x55	5/8-11 UNC x 2-1/4	
350	400	51	2	BFX-606-G	50	37,0	118	137	44,5	96,8	65	33	2	21,0	M20x70	3/4-10 UNC x 2-3/4	

¹ The maximum working pressure applies only to the flange itself and depends on the bolts used Grade 8.8 / 10.9). The actual maximum working pressure depends on the thickness and the quality of the tube used.

² For UNC threaded bolts, use hexagon head bolts only. Please note that these do not belong to our product range.

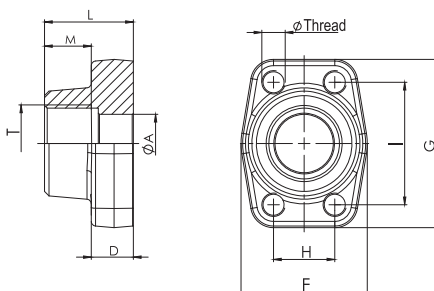
³ Alternative options shown in brackets are available on request.

SAE Single-Part Screw-in BSPP Threaded Counterflange
BAS-G

Order Codes

- * SAE Single-Part Screw-in BSPP Threaded Counterflange
- * For UNC bolts
- * Deviant screw-in BSPP thread
- * For deviant Metric bolts (M14), deviant screw-in BSPP thread

- BAS-...-G
- BAS-...-GU
- BAS-...-G***
- BAS-...-GM14-100



Material S355J0 or equivalent
Surface blank, oiled
Special Material Stainless Steel 1.4404 "W5" on request

3000 PSI Standard Pressure Series (according to ISO 6162-1)

PN (bar) ¹		Nominal Size		Order Codes	Dimensions (mm)										Ø Thread	
8.8 Bolts	10.9 (MH) Bolts	DN	(in)		Ø A	D	F	G	H	I	L	M	T (BSPP)	Metr. ³	UNC	
350	350	13	1/2	BAS-301-G	13	16,0	47	57	17,5	38,1	36	15	1/2	M8	5/16-18 UNC	
350	350	13	1/2	BAS-301-G038	13	16,0	47	57	17,5	38,1	36	20	3/8	M8	5/16-18 UNC	
350	350	19	3/4	BAS-302-G	19	18,0	50	67	22,3	47,6	36	18	3/4	M10	3/8-16 UNC	
350	350	19	3/4	BAS-302-G012	13	18,0	50	67	22,3	47,6	36	15	1/2	M10	3/8-16 UNC	
250	315	25	1	BAS-303-G	25	18,0	54	72	26,2	52,4	38	20	1	M10	3/8-16 UNC	
250	315	25	1	BAS-303-G034	19	18,0	54	72	26,2	52,4	38	18	3/4	M10	3/8-16 UNC	
200	250	32	1-1/4	BAS-304-G	31	21,0	68	82	30,2	58,7	41	22	1-1/4	M10 (M12)	7/16-14 UNC	
200	250	32	1-1/4	BAS-304-G100	25	21,0	68	82	30,2	58,7	41	20	1	M10 (M12)	7/16-14 UNC	
200	200	38	1-1/2	BAS-305-G	38	25,0	79	96	35,7	69,9	44	24	1-1/2	M12 (M14)	1/2-13 UNC	
200	200	38	1-1/2	BAS-305-G114	31	25,0	79	96	35,7	69,9	44	22	1-1/4	M12 (M14)	1/2-13 UNC	
160	200	51	2	BAS-306-G	50	25,5	88	102	42,9	77,8	45	26	2	M12 (M14)	1/2-13 UNC	
160	200	51	2	BAS-306-G112	38	25,5	88	102	42,9	77,8	45	24	1-1/2	M12 (M14)	1/2-13 UNC	
100	160	64	2-1/2	BAS-307-G	63	26,0	101	115	50,8	88,9	50	30	2-1/2	M12 (M14)	1/2-13 UNC	
100	160	64	2-1/2	BAS-307-G200	50	26,0	101	115	50,8	88,9	50	26	2	M12 (M14)	1/2-13 UNC	
100	160	76	3	BAS-308-G	73	27,5	127	137	61,9	106,4	50	30	3	M16	5/8-11 UNC	
100	160	76	3	BAS-308-G212	63	27,5	127	137	61,9	106,4	50	30	2-1/2	M16	5/8-11 UNC	
35	35	89	3-1/2	BAS-309-G	89	27,5	138	155	69,8	120,7	50	30	3-1/2	M16	5/8-11 UNC	
35	35	102	4	BAS-310-G	99	27,5	147	163	77,8	130,2	50	30	4	M16	5/8-11 UNC	
35	35	127	5	BAS-311-G	120	28,0	180	184	92,0	152,4	50	30	5	M16	5/8-11 UNC	

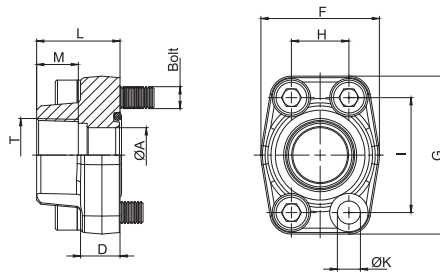
6000 PSI High Pressure Series (according to ISO 6162-2)

PN (bar) ¹		Nominal Size		Order Codes	Dimensions (mm)										Ø Thread	
8.8 Bolts	10.9 (MH) Bolts	DN	(in)		Ø A	D	F	G	H	I	L	M	T (BSPP)	Metr.	UNC	
350	400	13	1/2	BAS-601-G	13	16,5	47	57	18,2	40,5	36	15	1/2	M8	5/16-18 UNC	
350	400	13	1/2	BAS-601-G038	14	16,5	47	57	18,2	40,5	36	20	3/8	M8	5/16-18 UNC	
350	400	19	3/4	BAS-602-G	19	19,5	54	72	23,8	50,8	36	18	3/4	M10	3/8-16 UNC	
350	400	19	3/4	BAS-602-G012	14	19,5	54	72	23,8	50,8	36	15	1/2	M10	3/8-16 UNC	
350	400	25	1	BAS-603-G	25	24,5	68	82	27,8	57,2	44	20	1	M12	7/16-14 UNC	
350	400	25	1	BAS-603-G034	19	24,5	68	82	27,8	57,2	44	18	3/4	M12	7/16-14 UNC	
350	400	32	1-1/4	BAS-604-G	31	27,5	79	95	31,6	66,6	44	22	1-1/4	M12	1/2-13 UNC	
350	400	32	1-1/4	BAS-604-GM14	31	27,5	79	95	31,6	66,6	44	22	1-1/4	M14		
350	400	32	1-1/4	BAS-604-G100	25	27,5	79	95	31,6	66,6	44	20	1	M12	1/2-13 UNC	
350	400	32	1-1/4	BAS-604-GM14-100	25	27,5	79	95	31,6	66,6	44	20	1	M14		
350	400	38	1-1/2	BAS-605-G	38	31,0	88	108	36,5	79,3	51	24	1-1/2	M16	5/8-11 UNC	
350	400	38	1-1/2	BAS-605-G114	31	31,0	88	108	36,5	79,3	51	22	1-1/4	M16	5/8-11 UNC	
350	400	51	2	BAS-606-G	50	37,0	118	137	44,5	96,8	58	33	2	M20	3/4-10 UNC	

¹ The maximum working pressure applies only to the flange itself and depends on the bolts used (Grade 8.8 / 10.9). The actual maximum working pressure depends on the thickness and the quality of the tube used.

³ Alternative options shown in brackets are available on request.

SAE Single-Part Screw-in NPT Threaded Flange BFX-N



Order Codes

- * SAE Single-Part Screw-in NPT Threaded Flange without O-ring) **BFX-...-N**
- * Deviant screw-in NPT thread, including Metric bolts 8.8, spring rings, O-ring made of NBR Buna-N®) packed in kits) **BFX-...-N***#K**
- * Deviant screw-in NPT thread, including Metric bolts 10.9, spring rings, O-ring made of NBR Buna-N®) packed in kits) **BFX-...-N***-MH#K**
- * Including UNC bolts Gr10), spring rings, O-ring made of FPM Viton®) packed in kits) **BFX-...-N-V-U#K**

Material S355J0 or equivalent
Surface blank, oiled
Special Material Stainless Steel 1.4404 " -W5" on request

3000 PSI Standard Pressure Series (according to ISO 6162-1)

PN (bar) ¹		Nominal Size		Order Codes	Dimensions (mm)										for Bolts	
8.8 Bolts	10.9 (MH) Bolts	DN	(in)		Ø A	D	F	G	H	I	L	M	T (NPT)	Ø K ³	Metr. ³	UNC
350	350	13	1/2	BFX-301-N	13	16,0	47	57	17,5	38,1	36	15	1/2	8,7	M8x30	5/16-18 UNC x 1-1/4
350	350	13	1/2	BFX-301-N038	13	16,0	47	57	17,5	38,1	36	20	3/8	8,7	M8x30	5/16-18 UNC x 1-1/4
350	350	19	3/4	BFX-302-N	19	18,0	50	67	22,3	47,6	36	18	3/4	10,5	M10x35	3/8-16 UNC x 1-1/2
350	350	19	3/4	BFX-302-N012	13	18,0	50	67	22,3	47,6	36	15	1/2	10,5	M10x35	3/8-16 UNC x 1-1/2
250	315	25	1	BFX-303-N	25	18,0	54	72	26,2	52,4	38	20	1	10,5	M10x35	3/8-16 UNC x 1-1/2
250	315	25	1	BFX-303-N034	19	18,0	54	72	26,2	52,4	38	18	3/4	10,5	M10x35	3/8-16 UNC x 1-1/2
200	250	32	1-1/4	BFX-304-N	31	21,0	68	82	30,2	58,7	41	22	1-1/4	11,7 (13,5)	M10x40 (M12x40)	7/16-14 UNC x 1-1/2
200	250	32	1-1/4	BFX-304-N100	25	21,0	68	82	30,2	58,7	41	20	1	11,7 (13,5)	M10x40 (M12x40)	7/16-14 UNC x 1-1/2
200	200	38	1-1/2	BFX-305-N	38	25,0	79	96	35,7	69,9	44	24	1-1/2	13,5 (14,5)	M12x45 (M14x45)	1/2-13 UNC x 1-3/4
200	200	38	1-1/2	BFX-305-N114	31	25,0	79	96	35,7	69,9	44	22	1-1/4	13,5 (14,5)	M12x45 (M14x45)	1/2-13 UNC x 1-3/4
160	200	51	2	BFX-306-N	50	25,5	88	102	42,9	77,8	45	26	2	13,5 (14,5)	M12x45 (M14x45)	1/2-13 UNC x 1-3/4
160	200	51	2	BFX-306-N112	38	25,5	88	102	42,9	77,8	45	24	1-1/2	13,5 (14,5)	M12x45 (M14x45)	1/2-13 UNC x 1-3/4
100	160	64	2-1/2	BFX-307-N	63	26,0	101	115	50,8	88,9	50	30	2-1/2	13,5 (14,5)	M12x45 (M14x45)	1/2-13 UNC x 1-3/4
100	160	64	2-1/2	BFX-307-N200	50	26,0	101	115	50,8	88,9	50	26	2	13,5 (14,5)	M12x45 (M14x45)	1/2-13 UNC x 1-3/4
100	160	76	3	BFX-308-N	73	27,5	127	137	61,9	106,4	50	30	3	17,0	M16x50	5/8-11 UNC x 2
100	160	76	3	BFX-308-N212	63	27,5	127	137	61,9	106,4	50	30	2-1/2	17,0	M16x50	5/8-11 UNC x 2
35	35	89	3-1/2	BFX-309-N	89	27,5	138	155	69,8	120,7	50	30	3-1/2	17,0	M16x50	5/8-11 UNC x 2
35	35	102	4	BFX-310-N	99	27,5	147	163	77,8	130,2	50	30	4	17,0	M16x50	5/8-11 UNC x 2
35	35	127	5	BFX-311-N	120	28,0	180	184	92,0	152,4	50	30	5	17,0	M16x55	5/8-11 UNC x 2-1/4

6000 PSI High Pressure Series (according to ISO 6162-2)

PN (bar) ¹		Nominal Size		Order Codes	Dimensions (mm)										for Bolts	
8.8 Bolts	10.9 (MH) Bolts	DN	(in)		Ø A	D	F	G	H	I	L	M	T (NPT)	Ø K ³	Metr. ³	UNC
350	400	13	1/2	BFX-601-N	13	16,5	47	57	18,2	40,5	36	15	1/2	8,7	M8x30	5/16-18 UNC x 1-1/4
350	400	13	1/2	BFX-601-N038	14	16,5	47	57	18,2	40,5	36	20	3/8	8,7	M8x30	5/16-18 UNC x 1-1/4
350	400	19	3/4	BFX-602-N	19	19,5	54	72	23,8	50,8	36	18	3/4	10,5	M10x35	3/8-16 UNC x 1-1/2
350	400	19	3/4	BFX-602-N012	14	19,5	54	72	23,8	50,8	36	15	1/2	10,5	M10x35	3/8-16 UNC x 1-1/2
350	400	25	1	BFX-603-N	25	24,5	68	82	27,8	57,2	44	20	1	13,0	M12x45	7/16-14 UNC x 1-3/4
350	400	25	1	BFX-603-N034	19	24,5	68	82	27,8	57,2	44	18	3/4	13,0	M12x45	7/16-14 UNC x 1-3/4
350	400	32	1-1/4	BFX-604-N	31	27,5	79	95	31,6	66,6	44	22	1-1/4	13,5	M12x45	1/2-13 UNC x 1-3/4
350	400	32	1-1/4	BFX-604-N-M14	31	27,5	79	95	31,6	66,6	44	22	1-1/4	15,0	M14x45	
350	400	32	1-1/4	BFX-604-N100	25	27,5	79	95	31,6	66,6	44	20	1	13,5	M12x45	1/2-13 UNC x 1-3/4
350	400	32	1-1/4	BFX-604-N100-M14	25	27,5	79	95	31,6	66,6	44	20	1	15,0	M14x45	
350	400	38	1-1/2	BFX-605-N	38	31,0	88	108	36,5	79,3	51	24	1-1/2	17,0	M16x55	5/8-11 UNC x 2-1/4
350	400	38	1-1/2	BFX-605-N114	31	31,0	88	108	36,5	79,3	51	22	1-1/4	17,0	M16x55	5/8-11 UNC x 2-1/4
350	400	51	2	BFX-606-N	50	37,0	118	137	44,5	96,8	65	33	2	21,0	M20x70	3/4-10 UNC x 2-3/4

¹ The maximum working pressure applies only to the flange itself and depends on the bolts used (Grade 8.8 / 10.9). The actual maximum working pressure depends on the thickness and the quality of the tube used.

² For UNC threaded bolts, use hexagon head bolts only. Please note that these do not belong to our product range.

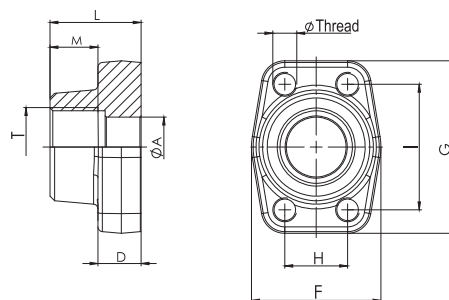
³ Alternative options shown in brackets are available on request.

SAE Single-Part Screw-in NPT Threaded Counterflange
BAS-N

Order Codes

- * SAE Single-Part Screw-in NPT Threaded Counterflange
- * For UNC bolts
- * Deviant screw-in NPT thread
- * For deviant Metric bolts (M14), deviant screw-in NPT thread

BAS-...-N
BAS-...-NU
BAS-...-N***
BAS-...-NM14-100



Material S355J0 or equivalent
Surface blank, oiled
Special Material Stainless Steel 1.4404 "W5" on request

3000 PSI Standard Pressure Series (according to ISO 6162-1)

PN (bar) ¹		Nominal Size		Order Codes	Dimensions (mm)									Ø Thread	
8.8 Bolts	10.9 (MH) Bolts	DN	(in)		Ø A	D	F	G	H	I	L	M	T (NPT)	Metr. ³	UNC
350	350	13	1/2	BAS-301-N	13	16,0	47	57	17,5	38,1	36	15	1/2	M8	5/16-18 UNC
350	350	13	1/2	BAS-301-N038	13	16,0	47	57	17,5	38,1	36	20	3/8	M8	5/16-18 UNC
350	350	19	3/4	BAS-302-N	19	18,0	50	67	22,3	47,6	36	18	3/4	M10	3/8-16 UNC
350	350	19	3/4	BAS-302-N012	13	18,0	50	67	22,3	47,6	36	15	1/2	M10	3/8-16 UNC
250	315	25	1	BAS-303-N	25	18,0	54	72	26,2	52,4	38	20	1	M10	3/8-16 UNC
250	315	25	1	BAS-303-N034	19	18,0	54	72	26,2	52,4	38	18	3/4	M10	3/8-16 UNC
200	250	32	1-1/4	BAS-304-N	31	21,0	68	82	30,2	58,7	41	22	1-1/4	M10 (M12)	7/16-14 UNC
200	250	32	1-1/4	BAS-304-N100	25	21,0	68	82	30,2	58,7	41	20	1	M10 (M12)	7/16-14 UNC
200	200	38	1-1/2	BAS-305-N	38	25,0	79	96	35,7	69,9	44	24	1-1/2	M12 (M14)	1/2-13 UNC
200	200	38	1-1/2	BAS-305-N114	31	25,0	79	96	35,7	69,9	44	22	1-1/4	M12 (M14)	1/2-13 UNC
160	200	51	2	BAS-306-N	50	25,5	88	102	42,9	77,8	45	26	2	M12 (M14)	1/2-13 UNC
160	200	51	2	BAS-306-N112	38	25,5	88	102	42,9	77,8	45	24	1-1/2	M12 (M14)	1/2-13 UNC
100	160	64	2-1/2	BAS-307-N	63	26,0	101	115	50,8	88,9	50	30	2-1/2	M12 (M14)	1/2-13 UNC
100	160	64	2-1/2	BAS-307-N200	50	26,0	101	115	50,8	88,9	50	26	2	M12 (M14)	1/2-13 UNC
100	160	76	3	BAS-308-N	73	27,5	127	137	61,9	106,4	50	30	3	M16	5/8-11 UNC
100	160	76	3	BAS-308-N212	63	27,5	127	137	61,9	106,4	50	30	2-1/2	M16	5/8-11 UNC
35	35	89	3-1/2	BAS-309-N	89	27,5	138	155	69,8	120,7	50	30	3-1/2	M16	5/8-11 UNC
35	35	102	4	BAS-310-N	99	27,5	147	163	77,8	130,2	50	30	4	M16	5/8-11 UNC
35	35	127	5	BAS-311-N	120	28,0	180	184	92,0	152,4	50	30	5	M16	5/8-11 UNC

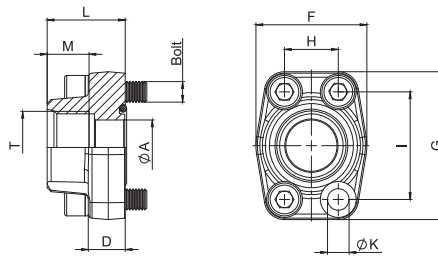
6000 PSI High Pressure Series (according to ISO 6162-2)

PN (bar) ¹		Nominal Size		Order Codes	Dimensions (mm)									Ø Thread	
8.8 Bolts	10.9 (MH) Bolts	DN	(in)		Ø A	D	F	G	H	I	L	M	T (NPT)	Metr.	UNC
350	400	13	1/2	BAS-601-N	13	16,5	47	57	18,2	40,5	36	15	1/2	M8	5/16-18 UNC
350	400	13	1/2	BAS-601-N038	14	16,5	47	57	18,2	40,5	36	20	3/8	M8	5/16-18 UNC
350	400	19	3/4	BAS-602-N	19	19,5	54	72	23,8	50,8	36	18	3/4	M10	3/8-16 UNC
350	400	19	3/4	BAS-602-N012	14	19,5	54	72	23,8	50,8	36	15	1/2	M10	3/8-16 UNC
350	400	25	1	BAS-603-N	25	24,5	68	82	27,8	57,2	44	20	1	M12	7/16-14 UNC
350	400	25	1	BAS-603-N034	19	24,5	68	82	27,8	57,2	44	18	3/4	M12	7/16-14 UNC
350	400	32	1-1/4	BAS-604-N	31	27,5	79	95	31,6	66,6	44	22	1-1/4	M12	1/2-13 UNC
350	400	32	1-1/4	BAS-604-NM14	31	27,5	79	95	31,6	66,6	44	22	1-1/4	M14	
350	400	32	1-1/4	BAS-604-N100	25	27,5	79	95	31,6	66,6	44	20	1	M12	1/2-13 UNC
350	400	32	1-1/4	BAS-604-NM14-100	25	27,5	79	95	31,6	66,6	44	20	1	M14	
350	400	38	1-1/2	BAS-605-N	38	31,0	88	108	36,5	79,3	51	24	1-1/2	M16	5/8-11 UNC
350	400	38	1-1/2	BAS-605-N114	31	31,0	88	108	36,5	79,3	51	22	1-1/4	M16	5/8-11 UNC
350	400	51	2	BAS-606-N	50	37,0	118	137	44,5	96,8	58	33	2	M20	3/4-10 UNC

¹ The maximum working pressure applies only to the flange itself and depends on the bolts used (Grade 8.8 / 10.9). The actual maximum working pressure depends on the thickness and the quality of the tube used.

³ Alternative options shown in brackets are available on request.

**SAE Single-Part Screw-in UN Threaded Flange
BFX-U**



Material S355J0 or equivalent
Surface blank, oiled
Special Material Stainless Steel 1.4404 “-W5” on request

Order Codes

- * SAE Single-Part Screw-in UN Threaded Flange without O-ring) **BFX-...-U****
- * Including Metric bolts 8.8, spring rings, O-ring made of NBR Buna-N®) packed in kits) **BFX-...-U**#K**
- * Including Metric bolts 10.9, spring rings, O-ring made of NBR Buna-N®) packed in kits) **BFX-...-U**-MH#K**
- * Including UNC bolts Gr10, spring rings, O-ring made of FPM Viton®) packed in kits) **BFX-...-U**-V-U#K**

3000 PSI Standard Pressure Series (according to ISO 6162-1)

PN (bar) ¹		Nominal Size		Order Codes	Dimensions (mm)										for Bolts	
8.8 Bolts	10.9 (MH) Bolts	DN	(in)		Ø A	D	F	G	H	I	L	M	T (UN/UNF)	Ø K ³	Metr. ³	UNC
350	350	13	1/2	BFX-301-U3/4	13	16	47	57	17,5	38,1	36	14,3	3/4-16	8,7	M8x30	5/16-18 UNC x 1-1/4
350	350	19	3/4	BFX-302-U7/8	19	18	50	67	22,3	47,6	36	16,7	7/8-14	10,5	M10x35	3/8-16 UNC x 1-1/2
350	350	19	3/4	BFX-302-U11/16	19	18	50	67	22,3	47,6	36	16,7	1-1/16-12	10,5	M10x35	3/8-16 UNC x 1-1/2
250	315	25	1	BFX-303-U11/16	25	18	54	72	26,2	52,4	38	19,0	1-1/16-12	10,5	M10x35	3/8-16 UNC x 1-1/2
250	315	25	1	BFX-303-U15/16	25	18	54	72	26,2	52,4	38	19,0	1-5/16-12	10,5	M10x35	3/8-16 UNC x 1-1/2
200	250	32	1-1/4	BFX-304-U15/16	31	21	68	82	30,2	58,7	41	19,0	1-5/16-12	11,7 (13,5)	M10x40 (M12x40)	7/16-14 UNC x 1-1/2
200	250	32	1-1/4	BFX-304-U15/8	31	21	68	82	30,2	58,7	41	19,0	1-5/8-12	11,7 (13,5)	M10x40 (M12x40)	7/16-14 UNC x 1-1/2
200	200	38	1-1/2	BFX-305-U15/8	38	25	79	96	35,7	69,9	44	19,0	1-5/8-12	13,5 (14,5)	M12x45 (M14x45)	1/2-13 UNC x 1-3/4
200	200	38	1-1/2	BFX-305-U17/8	38	25	79	96	35,7	69,9	44	19,0	1-7/8-12	13,5 (14,5)	M12x45 (M14x45)	1/2-13 UNC x 1-3/4

6000 PSI High Pressure Series (according to ISO 6162-2)

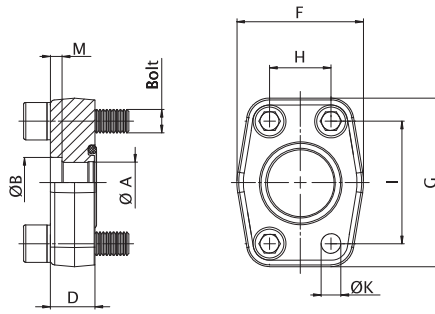
PN (bar) ¹		Nominal Size		Order Codes	Dimensions (mm)										for Bolts	
8.8 Bolts	10.9 (MH) Bolts	DN	(in)		Ø A	D	F	G	H	I	L	M	T (UN/UNF)	Ø K	Metr.	UNC
350	400	13	1/2	BFX-601-U3/4	13	16,5	47	57	18,2	40,5	36	14,3	3/4-16	8,7	M8x30	5/16-18 UNC x 1-1/4
350	400	19	3/4	BFX-602-U7/8	19	19,5	54	72	23,8	50,8	36	16,7	7/8-14	10,5	M10x35	3/8-16 UNC x 1-1/2
350	400	19	3/4	BFX-602-U11/16	19	19,5	54	72	23,8	50,8	36	16,7	1-1/16-12	10,5	M10x35	3/8-16 UNC x 1-1/2
350	400	25	1	BFX-603-U11/16	25	24,5	68	82	27,8	57,1	44	19,0	1-1/16-12	13,0	M12x45	7/16-14 UNC x 1-3/4
350	400	25	1	BFX-603-U15/16	25	24,5	68	82	27,8	57,1	44	19,0	1-5/16-12	13,0	M12x45	7/16-14 UNC x 1-3/4
350	400	32	1-1/4	BFX-604-U15/16	31	27,5	79	95	31,6	66,7	44	19,0	1-5/16-12	13,5		1/2-13 UNC x 1-3/4
350	400	32	1-1/4	BFX-604-U15/16-M14	31	27,5	79	95	31,6	66,7	44	19,0	1-5/16-12	15,0	M14x45	
350	400	32	1-1/4	BFX-604-U15/8	31	27,5	79	95	31,6	66,7	44	19,0	1-5/8-12	13,5		1/2-13 UNC x 1-3/4
350	400	32	1-1/4	BFX-604-U15/8-M14	31	27,5	79	95	31,6	66,7	44	19,0	1-5/8-12	15,0	M14x45	
350	400	38	1-1/2	BFX-605-U15/8	38	31,0	88	108	36,5	79,4	51	19,0	1-5/8-12	17,0	M16x55	5/8-11 UNC x 2-1/4
350	400	38	1-1/2	BFX-605-U17/8	38	31,0	88	108	36,5	79,4	51	19,0	1-7/8-12	17,0	M16x55	5/8-11 UNC x 2-1/4

¹ The maximum working pressure applies only to the flange itself and depends on the bolts used (Grade 8.8 / 10.9). The actual maximum working pressure depends on the thickness and the quality of the tube used.

² For UNC threaded bolts, use hexagon head bolts only. Please note that these do not belong to our product range.

³ Alternative options shown in brackets are available on request.

SAE Single-Part Socket Weld Flange (Flat Style) BFX-FL-ES



Order Codes

- * SAE Single-Part Socket Weld **BFX-FL-...-ES-**-**/**** Flange (Flat Style) without O-ring
- * Including Metric bolts 8.8, **BFX-FL-...-ES-**-**/**#K** spring rings, O-ring made of NBR Buna-N®) packed in kits)

Material S355J0 or equivalent
Surface blank, oiled
Special Material Stainless Steel 1.4404 "-W5" on request

3000 PSI Standard Pressure Series (according to ISO 6162-1)

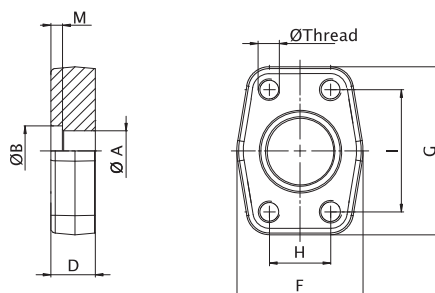
PN (bar) ¹		Nominal Size		Order Codes	Dimensions (mm)										for Bolts
8.8 Bolts	10.9 (MH) Bolts	DN	(in)		Ø A	Ø B	D	F	G	H	I	M	Ø K	Metr.	
40	40	13	1/2	BFX-FL-301-ES-22,5/15	15	22,5	10	47	57	17,5	38,1	3	8,7	M8x25	
40	40	19	3/4	BFX-FL-302-ES-28,5/20	20	28,5	12	50	67	22,3	47,6	4	10,5	M10x30	
40	40	25	1	BFX-FL-303-ES-35,5/29	29	35,5	12	54	72	26,2	52,4	4	10,5	M10x30	
40	40	32	1-1/4	BFX-FL-304-ES-42,5/34	34	42,5	12	68	82	30,2	58,7	4	11,7	M10x30	
40	40	38	1-1/2	BFX-FL-305-ES-49/42	42	49,0	15	79	96	35,7	69,9	4	13,5	M12x35	
40	40	51	2	BFX-FL-306-ES-61/53	53	61,0	15	88	102	42,9	77,8	4	13,5	M12x35	
40	40	64	2-1/2	BFX-FL-307-ES-77/64	64	77,0	15	101	115	50,8	88,9	4	13,5	M12x35	
40	40	76	3	BFX-FL-308-ES-90/80	80	90,0	20	127	137	61,9	106,4	5	17,0	M16x50	
35	35	89	3-1/2	BFX-FL-309-ES-103/93	93	103,0	20	138	155	69,9	120,7	5	17,0	M16x50	
35	35	102	4	BFX-FL-310-ES-116/105	105	116,0	25	147	163	77,8	130,2	6	17,0	M16x50	
35	35	125	5	BFX-FL-311-ES-141/126	126	141,0	28	170	190	92,1	152,4	8	17,0	M16x50	

¹ The maximum working pressure applies only to the flange itself. The actual maximum working pressure depends on the thickness and the quality of the tube used.

SAE Single-Part Socket Weld Counterflange (Flat Style)
BAS-FL-ES

Order Codes

* SAE Single-Part Butt Weld Counterflange (Flat Style) **BAS-FL-...-ES-**-**/****



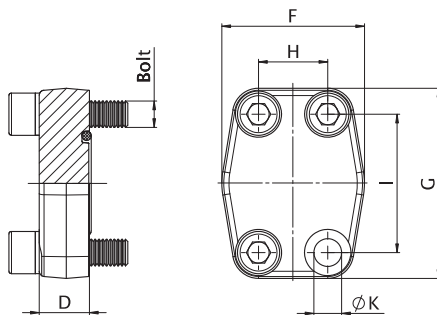
Material S355J0 or equivalent
Surface blank, oiled
Special Material Stainless Steel 1.4404 “-W5” on request

3000 PSI Standard Pressure Series (according to ISO 6162-1)

PN (bar) ¹		Nominal Size		Order Codes	Dimensions (mm)									Ø Thread
8.8 Bolts	10.9 (MH) Bolts	DN	(in)		Ø A	Ø B	D	F	G	H	I	M	Metr.	
40	40	13	1/2	BAS-FL-301-ES-22,5/15	15	22,5	10	47	57	17,5	38,1	3	M8	
40	40	19	3/4	BAS-FL-302-ES-28,5/20	20	28,5	12	50	67	22,3	47,6	4	M10	
40	40	25	1	BAS-FL-303-ES-35,5/29	29	35,5	12	54	72	26,2	52,4	4	M10	
40	40	32	1-1/4	BAS-FL-304-ES-42,5/34	34	42,5	12	68	82	30,2	58,7	4	M10	
40	40	38	1-1/2	BAS-FL-305-ES-49/42	42	49,0	15	79	96	35,7	69,9	4	M12	
40	40	51	2	BAS-FL-306-ES-61/53	53	61,0	15	88	102	42,9	77,8	4	M12	
40	40	64	2-1/2	BAS-FL-307-ES-77/64	64	77,0	15	101	115	50,8	88,9	4	M12	
40	40	76	3	BAS-FL-308-ES-90/80	80	90,0	20	127	137	61,9	106,4	5	M16	
35	35	89	3-1/2	BAS-FL-309-ES-103/93	93	103,0	20	138	155	69,9	120,7	5	M16	
35	35	102	4	BAS-FL-310-ES-116/105	105	116,0	25	147	163	77,8	130,2	6	M16	
35	35	125	5	BAS-FL-311-ES-141/126	126	141,0	28	170	190	92,1	152,4	8	M16	

¹ The maximum working pressure applies only to the flange itself. The actual maximum working pressure depends on the thickness and the quality of the tube used.

**SAE Single-Part Blanking Flange
BFX-CP**



Order Codes

- * SAE Single-Part Blanking Flange (without O-ring) **BFX-...-CP**
- * Including Metric bolts 8.8, spring rings, O-ring made of NBR (Buna-N®) (packed in kits) **BFX-...-CP#K**
- * Including Metric bolts 10.9, spring rings, O-ring made of NBR (Buna-N®) (packed in kits) **BFX-...-MH-CP#K**
- * Including UNC bolts (Gr10), spring rings, O-ring made of FPM (Viton®) (packed in kits) **BFX-...-CP-V-U#K**

Material S355J0/C45 or equivalent
Surface blank, oiled
Special Material Stainless Steel 1.4404 " -W5" on request

3000 PSI Standard Pressure Series (according to ISO 6162-1)

PN (bar) ¹		Nominal Size		Order Codes	Dimensions (mm)						for Bolts	
8.8 Bolts	10.9 (MH) Bolts	DN	(in)		D	F	G	H	I	Ø K ³	Metr. ³	UNC
350	350	13	1/2	BFX-301-CP	16	47	57	17,5	38,1	8,7	M8x30	5/16-18 UNC x 1-1/4
350	350	19	3/4	BFX-302-CP	18	50	67	22,3	47,6	10,5	M10x35	3/8-16 UNC x 1-1/2
250	315	25	1	BFX-303-CP	19	54	72	26,2	52,4	10,5	M10x35	3/8-16 UNC x 1-1/2
200	250	32	1-1/4	BFX-304-CP	18	68	82	30,2	58,7	11,7 (13,5)	M10x40 (M12x40)	7/16-14 UNC x 1-1/2
200	200	38	1-1/2	BFX-305-CP	20	79	96	35,7	69,9	13,5 (14,5)	M12x45 (M14x45)	1/2-13 UNC x 1-3/4
160	200	51	2	BFX-306-CP	20	88	102	42,9	77,8	13,5 (14,5)	M12x45 (M14x45)	1/2-13 UNC x 1-3/4
100	160	64	2-1/2	BFX-307-CP	20	101	115	50,8	88,9	13,5 (14,5)	M12x45 (M14x45)	1/2-13 UNC x 1-3/4
100	160	76	3	BFX-308-CP	24	127	137	61,9	106,4	17,0	M16x50	5/8-11 UNC x 2
35	35	89	3-1/2	BFX-309-CP	22	138	155	69,8	120,7	17,0	M16x50	5/8-11 UNC x 2
35	35	102	4	BFX-310-CP	25	147	163	77,8	130,2	17,0	M16x50	5/8-11 UNC x 2
35	35	127	5	BFX-311-CP	25	180	184	92,0	152,4	17,0	M16x55	5/8-11 UNC x 2-1/4

6000 PSI High Pressure Series (according to ISO 6162-2)

PN (bar) ¹		Nominal Size		Order Codes	Dimensions (mm)						for Bolts	
8.8 Bolts	10.9 (MH) Bolts	DN	(in)		D	F	G	H	I	Ø K	Metr.	UNC
350	400	13	1/2	BFX-601-CP	16	47	57	18,2	40,5	8,7	M8x30	5/16-18 UNC x 1-1/4
350	400	19	3/4	BFX-602-CP	19	54	72	23,8	50,8	10,5	M10x35	3/8-16 UNC x 1-1/2
350	400	25	1	BFX-603-CP	24	68	82	27,8	57,2	13,0	M12x45	7/16-14 UNC x 1-3/4
350	400	32	1-1/4	BFX-604-CP	27	79	95	31,8	66,6	13,5	M12x45	1/2-13 UNC x 1-3/4
350	400	32	1-1/4	BFX-604-CP-M14	27	79	95	31,8	66,6	15,0	M14x45	
350	400	38	1-1/2	BFX-605-CP	30	88	108	36,5	79,3	17,0	M16x55	5/8-11 UNC x 2-1/4
350	400	51	2	BFX-606-CP	30	118	137	44,5	96,8	21,0	M20x65	3/4-10 UNC x 2-3/4

¹ The maximum working pressure applies only to the flange itself and depends on the bolts used (Grade 8.8 / 10.9).

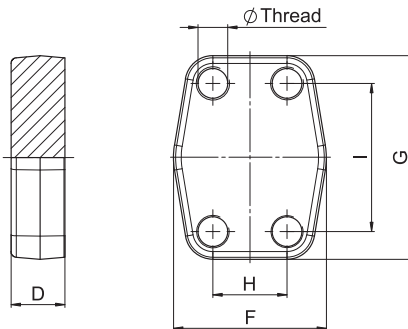
² For UNC threaded bolts, use hexagon head bolts only. Please note that these do not belong to our product range.

³ Alternative options shown in brackets are available on request.

**SAE Single-Part Blanking Counterflange
BAS-CP**

Order Codes

- * SAE Single-Part Blanking Counterflange **BAS-...-CP**
- * For UNC bolts **BAS-...-CPU**
- * For deviant Metric bolts (M14) **BAS-...-CPM14**



Material S355J0/C45 or equivalent
Surface blank, oiled
Special Material Stainless Steel 1.4404 “-W5” on request

3000 PSI Standard Pressure Series (according to ISO 6162-1)

PN (bar) ¹		Nominal Size		Order Codes	Dimensions (mm)					Ø Thread	
8.8 Bolts	10.9 (MH) Bolts	DN	(in)		D	F	G	H	I	Metr. ³	UNC
350	350	13	1/2	BAS-301-CP	16	47	57	17,5	38,1	M8	5/16-18 UNC
350	350	19	3/4	BAS-302-CP	18	50	67	22,3	47,6	M10	3/8-16 UNC
250	315	25	1	BAS-303-CP	19	54	72	26,2	52,4	M10	3/8-16 UNC
200	250	32	1-1/4	BAS-304-CP	18	68	82	30,2	58,7	M10 (M12)	7/16-14 UNC
200	200	38	1-1/2	BAS-305-CP	20	79	96	35,7	69,9	M12 (M14)	1/2-13 UNC
160	200	51	2	BAS-306-CP	20	88	102	42,9	77,8	M12 (M14)	1/2-13 UNC
100	160	64	2-1/2	BAS-307-CP	20	101	115	50,8	88,9	M12 (M14)	1/2-13 UNC
100	160	76	3	BAS-308-CP	24	127	137	61,9	106,4	M16	5/8-11 UNC
35	35	89	3-1/2	BAS-309-CP	22	138	155	69,8	120,7	M16	5/8-11 UNC
35	35	102	4	BAS-310-CP	25	147	163	77,8	130,2	M16	5/8-11 UNC
35	35	127	5	BAS-311-CP	25	180	184	92,0	152,4	M16	5/8-11 UNC

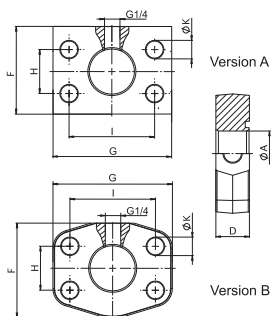
6000 PSI High Pressure Series (according to ISO 6162-2)

PN (bar) ¹		Nominal Size		Order Codes	Dimensions (mm)					Ø Thread	
8.8 Bolts	10.9 (MH) Bolts	DN	(in)		D	F	G	H	I	Metr.	UNC
350	400	13	1/2	BAS-601-CP	16	47	57	18,2	40,5	M8	5/16-18 UNC
350	400	19	3/4	BAS-602-CP	19	54	72	23,8	50,8	M10	3/8-16 UNC
350	400	25	1	BAS-603-CP	24	68	82	27,8	57,2	M12	7/16-14 UNC
350	400	32	1-1/4	BAS-604-CP	27	79	95	31,8	66,6	M12	1/2-13 UNC
350	400	32	1-1/4	BAS-604-CPM14	27	79	95	31,8	66,6	M14	
350	400	38	1-1/2	BAS-605-CP	30	88	108	36,5	79,3	M16	5/8-11 UNC
350	400	51	2	BAS-606-CP	30	118	137	44,5	96,8	M20	3/4-10 UNC

¹ The maximum working pressure applies only to the flange itself and depends on the bolts used (Grade 8.8 / 10.9).

³ Alternative options shown in brackets are available on request.

**SAE Sandwich Plate (e.g. for Test Point) - Female BSPP Port
SPL-G1/4-L**



Material S355J0/C45 or equivalent
Surface blank, oiled
Special Material Stainless Steel 1.4404 "-W5" on request

Order Codes

★ SAE Sandwich Plate **SPL-...-G1/4-L**
 (e.g. for Test Point) Female BSPP Port



Please see **Turali Test** section for further information on the corresponding test points.

3000 PSI Standard Pressure Series (according to ISO 6162-1)

PN (bar) ¹		Nominal Size		Order Codes	Dimensions (mm)							
8.8 Bolts	10.9 (MH) Bolts	DN	(in)		Ø A	D	F	G	H	I	Ø K	Version
350	350	13	1/2	SPL-301-G1/4-L	12	24	40	55.0	17.5	38.1	8.7	A
350	350	19	3/4	SPL-302-G1/4-L	19	28	50	65.0	22.3	47.6	10.5	A
250	315	25	1	SPL-303-G1/4-L	24	25	60	70.6	26.2	52.4	10.5	B
200	250	32	1-1/4	SPL-304-G1/4-L	31	23	68	82.0	30.2	58.7	11.7	B
200	200	38	1-1/2	SPL-305-G1/4-L	38	24	79	96.0	35.7	69.9	13.5	B
160	200	51	2	SPL-306-G1/4-L	50	24	88	102.0	42.9	77.8	13.5	B

6000 PSI High Pressure Series (according to ISO 6162-2)

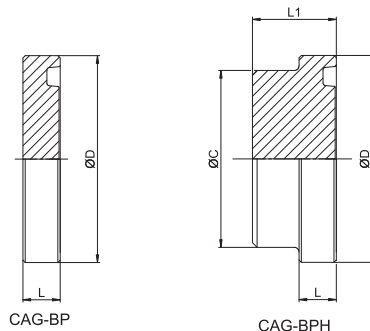
PN (bar) ¹		Nominal Size		Order Codes	Dimensions (mm)							
8.8 Bolts	10.9 (MH) Bolts	DN	(in)		Ø A	D	F	G	H	I	Ø K	Version
350	400	13	1/2	SPL-601-G1/4-L	12	24	40	55.0	18.2	40.5	8.7	A
350	400	19	3/4	SPL-602-G1/4-L	19	25	60	70.6	23.8	50.8	10.5	A
350	400	25	1	SPL-603-G1/4-L	25	23	68	82.0	27.8	57.2	13.0	B
350	400	32	1-1/4	SPL-604-G1/4-L	31	25	79	95.0	31.8	66.6	13.5	B
350	400	32	1-1/4	SPL-604-G1/4-L-M14	31	25	79	95.0	31.8	66.6	15.0	B
350	400	38	1-1/2	SPL-605-G1/4-L	38	28	88	108.0	36.5	79.3	17.0	B
350	400	51	2	SPL-606-G1/4-L	50	33	118	137.0	44.5	96.8	21.0	B

¹ The maximum working pressure applies only to the flange itself and depends on the bolts used (Grade 8.8 / 10.9).

**SAE Blindplug
CAG-BP / CAG-BPH (high Version)**

Order Codes

- * SAE Blindplug (without O-ring) **CAG-BP-...**
- * Including Metric bolts 8.8, spring rings, O-ring made of NBR (Buna-N®) and DB (packed in kits) **CAG-BP-...#K**
- * SAE Blindplug - high Version **CAG-BPH-...**
(without O-ring)
- * SAE Blindplug Counterflange high Version **CSG-BPH-...**



Material S355J0/C45 or equivalent
Surface CrVI free
Special Material Stainless Steel 1.4571 "W5" on request

3000 PSI Standard Pressure Series (according to ISO 6162-1)

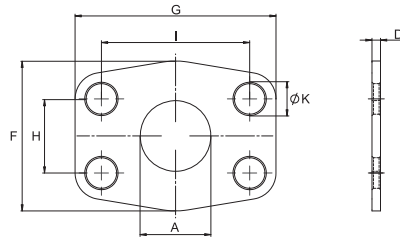
PN (bar)		Nominal Size		Order Codes	Order Codes	Dimensions (mm)			
BP	BPH	DN	(in)			Ø C	Ø D	L	L1
210	350	13	1/2	CAG-BP-301	CAG-BPH-301	24	30,2	6,8	15
210	350	19	3/4	CAG-BP-302	CAG-BPH-302	31,5	38,1	6,8	16
210	315	25	1	CAG-BP-303	CAG-BPH-303	38	44,45	8	18
200	250	32	1-1/4	CAG-BP-304	CAG-BPH-304	43	50,8	8	18
160	200	38	1-1/2	CAG-BP-305	CAG-BPH-305	50	60,35	8	18
160	200	51	2	CAG-BP-306	CAG-BPH-306	61,8	71,4	9,6	21
100	160	64	2-1/2	CAG-BP-307	CAG-BPH-307	73,8	84,1	9,6	21
100	160	76	3	CAG-BP-308	CAG-BPH-308	90	101,6	9,6	24
35	35	89	3-1/2	CAG-BP-309	CAG-BPH-309	102	114,3	11,3	45
35	35	102	4	CAG-BP-310	CAG-BPH-310	114	127	11,3	55

6000 PSI High Pressure Series (according to ISO 6162-2)

PN (bar)		Nominal Size		Order Codes	Order Codes	Dimensions (mm)			
BP	BPH	DN	(in)			Ø C	Ø D	L	L1
250	350	13	1/2	CAG-BP-601	CAG-BPH-601	24	31,8	7,8	18
250	350	19	3/4	CAG-BP-602	CAG-BPH-602	32	41,3	8,8	21
250	350	25	1	CAG-BP-603	CAG-BPH-603	38	47,6	9,5	26
250	350	32	1-1/4	CAG-BP-604 ²	CAG-BPH-604 ²	43,8	54	10,3	31
250	350	38	1-1/2	CAG-BP-605	CAG-BPH-605	50,8	63,5	12,6	34
250	350	51	2	CAG-BP-606	CAG-BPH-606	66,5	79,4	12,6	42

² According to ISO 6162-2 bolts M12 should be used but because usually bolts M14 are used the description of the complete clamp must show M14 (e.g. CAG-BP-604-M14#K).

SAE Sandwich Plate SPL



Order Codes

* SAE Sandwich Plate

SPL-...

Material ST35 or equivalent
Surface blank, oiled

3000 PSI Standard Pressure Series (according to ISO 6162-1)

Nominal Size		Order Codes	Dimensions (mm)							
DN	(in)		A	D	F	G	H	I	Ø K	
13	1/2	SPL-301	13	3	47	57	17,5	38,1	9	
19	3/4	SPL-302	19	3	49	66	22,3	47,6	11	
25	1	SPL-303	25	3	53	71	26,2	52,4	11	
32	1-1/4	SPL-304	32	3	69	80	30,2	58,7	11,5	
38	1-1/2	SPL-305	38	3	77	95	35,7	69,9	13,5	
51	2	SPL-306	51	3	89	103	42,9	77,8	13,5	
64	2-1/2	SPL-307	63	3	101	116	50,8	88,9	13,5	
76	3	SPL-308	73	4	124	136	61,9	106,4	17	
89	3-1/2	SPL-309	89	4	136	152	69,8	120,7	17	
102	4	SPL-310	99	4	146	162	77,8	130,2	17	
127	5	SPL-311	120	4	180	184	92	152,4	17	

6000 PSI High Pressure Series (according to ISO 6162-2)

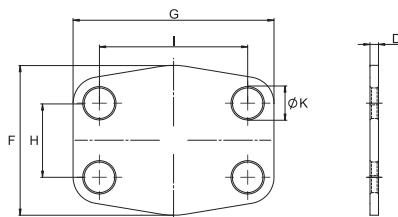
Nominal Size		Order Codes	Dimensions (mm)							
DN	(in)		A	D	F	G	H	I	Ø K	
13	1/2	SPL-601	13	4	47	57	18,2	40,5	9	
19	3/4	SPL-602	17	4	53	71	23,8	50,8	11	
25	1	SPL-603	24	4	66	80	27,8	57,2	13	
32	1-1/4	SPL-604-M14	31	4	77	94	31,8	66,6	15	
38	1-1/2	SPL-605	38	4	89	103	36,5	79,3	17	
51	2	SPL-606	51	4	116	135	44,5	96,8	21	
64	2-1/2	SPL-607	63	4	150	166	58,7	123,8	25	
76	3	SPL-608	73	4	178	208	71,4	152,4	32	

SAE Cover Plate
CPL

Order Codes

★ SAE Cover Plate

CPL-...



Material ST35 or equivalent
Surface blank, oiled

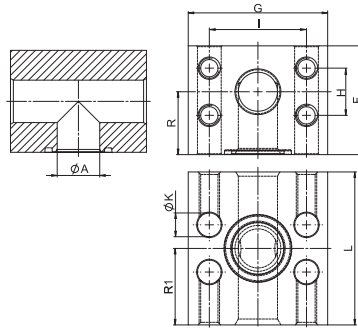
3000 PSI Standard Pressure Series (according to ISO 6162-1)

Nominal Size		Order Codes	Dimensions (mm)					
DN	(in)		D	F	G	H	I	Ø K
13	1/2	CPL-301	3	47	57	17,5	38,1	9
19	3/4	CPL-302	3	49	66	22,3	47,6	11
25	1	CPL-303	3	53	71	26,2	52,4	11
32	1-1/4	CPL-304	3	69	80	30,2	58,7	11,5
38	1-1/2	CPL-305	3	77	95	35,7	69,9	13,5
51	2	CPL-306	3	89	103	42,9	77,8	13,5
64	2-1/2	CPL-307	3	101	116	50,8	88,9	13,5
76	3	CPL-308	4	124	136	61,9	106,4	17
89	3-1/2	CPL-309	4	136	152	69,8	120,7	17
102	4	CPL-310	4	146	162	77,8	130,2	17
127	5	CPL-311	4	180	184	92	152,4	17

6000 PSI High Pressure Series (according to ISO 6162-2)

Nominal Size		Order Codes	Dimensions (mm)					
DN	(in)		D	F	G	H	I	Ø K
13	1/2	CPL-601	4	47	57	18,2	40,5	9
19	3/4	CPL-602	4	53	71	23,8	50,8	11
25	1	CPL-603	4	66	80	27,8	57,2	13
32	1-1/4	CPL-604-M14	4	77	94	31,8	66,6	15
38	1-1/2	CPL-605	4	89	103	36,5	79,3	17
51	2	CPL-606	4	116	135	44,5	96,8	21
64	2-1/2	CPL-607	4	150	166	58,7	123,8	25
76	3	CPL-608	4	178	208	71,4	152,4	32

SAE Block T-Connection (Adapter Style)
BF-T



Material S355J0 or equivalent
Surface CrVI-free
Special Material Stainless Steel 1.4404 "-W5" on request

Order Codes

- * SAE Block T-Connection (Adapter Style) **BF-T-...**
- * Deviant screw holes and threads **BF-T-...M****

6000 PSI High Pressure Series (according to ISO 6162-2)

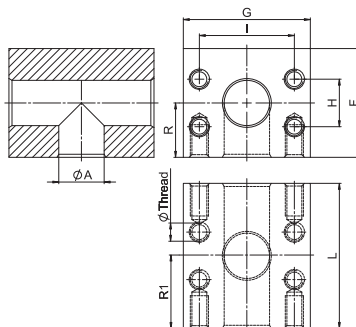
PN (bar) ¹		Nominal Size		Order Codes	Dimensions (mm)									Thread
8.8 Bolts	10.9 (MH) Bolts	DN	(in)		Ø A	F	G	H	I	L	R	R1	Ø K	Metr.
350	400	19	3/4	BF-T-602	19	55	72	23,8	50,8	72	32	36	11,0	M10
350	400	25	1	BF-T-603	23	64	82	27,8	57,2	90	37	45	13,5	M12
350	400	32	1-1/4	BF-T-604-M14	30	72	100	31,8	66,6	100	41	50	15,5	M14
350	400	38	1-1/2	BF-T-605	38	89	114	36,5	79,3	110	50	55	17,5	M16
350	400	51	2	BF-T-606	50	107	133	44,5	96,8	135	64	67,5	22,0	M20

¹ The maximum working pressure applies only to the flange itself and depends on the bolts used (Grade 8.8 / 10.9).

SAE Block T-Connection (Connector Style)
BC-T

Order Codes

- * SAE Block T-Connection (Connector Style) **BC-T-...**
- * Deviant Threads **BC-T-...M****



Material S355J0 or equivalent
Surface CrVI-free
Special Material Stainless Steel 1.4404 “-W5” on request

3000 PSI Standard Pressure Series (according to ISO 6162-1)

PN (bar) ¹		Nominal Size		Order Codes	Dimensions (mm)								Thread
8.8 Bolts	10.9 (MH) Bolts	DN	(in)		Ø A	F	G	H	I	L	R	R1	Metr.
350	350	13	1/2	BC-T-301	13	50	55	17,5	38,1	70	25,0	35,0	M8
350	350	19	3/4	BC-T-302	19	60	65	23,3	47,6	75	30,0	37,5	M8
250	315	25	1	BC-T-303	24	65	72	26,2	52,4	80	33,0	40,0	M10
200	250	32	1-1/4	BC-T-304	32	80	82	30,2	58,7	90	39,0	45,0	M10
200	200	38	1-1/2	BC-T-305	38	92	100	35,7	69,9	110	51,0	55,0	M10
160	200	51	2	BC-T-306	51	87	102	42,9	77,8	120	51,0	60,0	M12
100	160	64	2-1/2	BC-T-307	62	120	115	50,8	88,9	160	60,0	80,0	M12
100	138	76	3	BC-T-308	73	135	135	61,9	106,4	160	67,5	80,0	M16
35	35	89	3-1/2	BC-T-309	89	145	150	69,9	120,7	160	72,5	80,0	M16

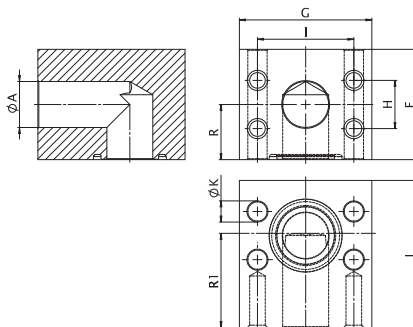
6000 PSI High Pressure Series (according to ISO 6162-2)

PN (bar) ¹		Nominal Size		Order Codes	Dimensions (mm)								Thread
8.8 Bolts	10.9 (MH) Bolts	DN	(in)		Ø A	F	G	H	I	L	R	R1	Metr.
350	400	13	1/2	BC-T-601	13	50	60	18,2	40,5	90	25,0	45,0	M8
350	400	19	3/4	BC-T-602	19	55	72	23,8	50,8	72	32,0	36,0	M10
350	400	25	1	BC-T-603	23	64	82	27,8	57,2	90	37,0	45,0	M12
350	400	32	1-1/4	BC-T-604	30	72	100	31,8	66,6	100	41,0	50,0	M12
350	400	32	1-1/4	BC-T-604M14	30	72	100	31,8	66,6	100	41,0	50,0	M14
350	400	38	1-1/2	BC-T-605	38	89	114	36,5	79,3	110	50,0	55,0	M16
350	400	51	2	BC-T-606	50	107	133	44,5	96,8	135	64,0	67,5	M20
350	400	64	2	BC-T-607	62	155	180	58,8	123,8	180	77,5	90,0	M24

¹ The maximum working pressure applies only to the flange itself and depends on the bolts used (Grade 8.8 / 10.9).

SAE Block L-Connection (Adapter Style)

BF-L



Order Codes

- * SAE Block L-Connection (Adapter Style) **BF-L-...**
- * Deviant screw holes and threads **BF-L-...M****

Material S355J0 or equivalent
Surface CrVI-free
Special Material Stainless Steel 1.4404 "-W5" on request

3000 PSI Standard Pressure Series (according to ISO 6162-1)

PN (bar) ¹		Nominal Size		Order Codes	Dimensions (mm)										Thread
8.8 Bolts	10.9 (MH) Bolts	DN	(in)		Ø A	F	G	H	I	L	R	R1	ØK	Metr.	
350	350	13	1/2	BF-L-301	13	50	55	17,5	38,1	55	25,0	35	9,0	M8	
350	350	20	3/4	BF-L-302	19	60	65	23,3	47,6	60	30,0	40	11,0	M10	
250	315	25	1	BF-L-303	24	65	72	26,2	52,4	65	33,0	40	11,0	M10	
200	200	32	1-1/4	BF-L-304	32	80	82	30,2	58,7	82	39,0	38	11,0	M10	
160	200	38	1-1/2	BF-L-305	38	92	100	35,7	69,9	92	51,0	59	13,5	M12	
100	160	51	2	BF-L-306	51	87	102	42,9	77,8	85	51,0	48	13,5	M12	
100	160	64	2-1/2	BF-L-307	62	120	110	50,8	88,9	110	60,0	65	13,5	M12	
100	138	76	3	BF-L-308	73	135	135	61,9	106,4	150	67,5	90	17,5	M16	
35	35	89	3-1/2	BF-L-309	89	145	150	69,9	120,7	145	72,5	75	17,5	M16	

6000 PSI High Pressure Series (according to ISO 6162-2)

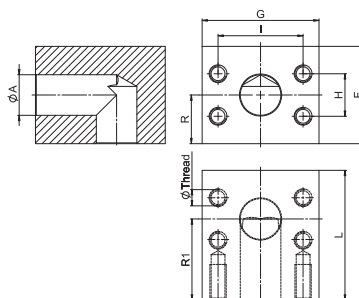
PN (bar) ¹		Nominal Size		Order Codes	Dimensions (mm)										Thread
8.8 Bolts	10.9 (MH) Bolts	DN	(in)		Ø A	F	G	H	I	L	R	R1	ØK	Metr.	
350	400	13	1/2	BF-L-601	13	50	60	18,2	40,5	60	25,0	40	9,0	M8	
350	400	19	3/4	BF-L-602	19	55	72	23,8	50,8	60	32,0	36	11,0	M10	
350	400	25	1	BF-L-603	23	64	82	27,8	57,2	68	37,0	40	13,5	M12	
350	400	32	1-1/4	BF-L-604	30	72	100	31,8	66,6	72	41,0	46	13,5	M12	
350	400	32	1-1/4	BF-L-604-M14	30	72	100	31,8	66,6	72	41,0	46	15,5	M14	
350	400	38	1-1/2	BF-L-605	38	89	114	36,5	79,3	86	50,0	52	17,5	M16	
350	400	51	2	BF-L-606	50	107	133	44,5	96,8	107	64,0	70	22,0	M20	
350	400	64	2-1/2	BF-L-607	62	155	180	58,8	123,8	160	77,5	90	26,0	M24	

¹ The maximum working pressure applies only to the flange itself and depends on the bolts used (Grade 8.8 / 10.9).

SAE Block L-Connection (Connector Style)
BC-L

Order Codes

- * SAE Block L-Connection (Connector Style) **BC-L-...**
- * Deviant threads **BC-L-...M****



Material S355J0 or equivalent
Surface CrVI-free
Special Material Stainless Steel 1.4404 "W5" on request

3000 PSI Standard Pressure Series (according to ISO 6162-1)

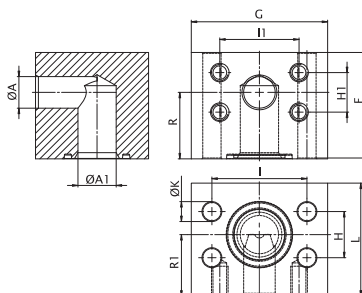
PN (bar) ¹		Nominal Size		Order Codes	Dimensions (mm)								Thread
8.8 Bolts	10.9 (MH) Bolts	DN	(in)		Ø A	F	G	H	I	L	R	R1	Metr.
350	350	13	1/2	BC-L-301	13	50	55	17,5	38,1	55	25,0	35	M8
350	350	20	3/4	BC-L-302	19	60	65	23,3	47,6	60	30,0	40	M10
250	315	25	1	BC-L-303	24	65	72	26,2	52,4	65	33,0	40	M10
200	200	32	1-1/4	BC-L-304	32	80	82	30,2	58,7	82	39,0	38	M10
160	200	38	1-1/2	BC-L-305	38	92	100	35,7	69,9	92	51,0	59	M12
100	160	51	2	BC-L-306	51	87	102	42,9	77,8	85	51,0	48	M12
100	160	64	2-1/2	BC-L-307	62	120	110	50,8	88,9	110	60,0	65	M12
100	138	76	3	BC-L-308	73	135	135	61,9	106,4	150	67,5	90	M16
35	35	89	3-1/2	BC-L-309	89	145	150	69,9	120,7	145	72,5	75	M16

6000 PSI High Pressure Series (according to ISO 6162-2)

PN (bar) ¹		Nominal Size		Order Codes	Dimensions (mm)								Thread
8.8 Bolts	10.9 (MH) Bolts	DN	(in)		Ø A	F	G	H	I	L	R	R1	Metr.
350	400	13	1/2	BC-L-601	13	50	60	18,2	40,5	60,0	25,0	40	M8
350	400	19	3/4	BC-L-602	19	55	72	23,8	50,8	60,0	32,0	36	M10
350	400	25	1	BC-L-603	23	64	82	27,8	57,2	68,0	37,0	40	M12
350	400	32	1-1/4	BC-L-604	30	72	100	31,8	66,6	76,0	41,0	46	M12
350	400	32	1-1/4	BC-L-604M14	30	72	100	31,8	66,6	76,0	41,0	46	M14
350	400	38	1-1/2	BC-L-605	38	89	114	36,5	79,3	86,0	50,0	52	M16
350	400	51	2	BC-L-606	50	107	133	44,5	96,8	107,0	64,0	70	M20
350	400	64	2-1/2	BC-L-607	62	155	180	58,8	123,8	160,0	77,5	90	M24

¹ The maximum working pressure applies only to the flange itself and depends on the bolts used (Grade 8.8 / 10.9).

SAE Block L-Connection Reduction (Adapter Style)
BF-L-RED



Order Codes

- * SAE Block L-Connection (Adapter Style) **BF-L-...-...**
- * Deviant screw holes **BF-L-...-M**-...**
- * Deviant threads **BF-L-...-...M****

Material S355J0 or equivalent
Surface CrVI-free
Special Material Stainless Steel 1.4404 "-W5" on request

3000 PSI Standard Pressure Series (according to ISO 6162-1)

PN (bar) ¹		Nominal Size		Order Codes	Dimensions (mm)													Thread
8.8 Bolts	10.9 (MH) Bolts	DN	(in)		Ø A	ØA1	F	G	H	H1	I1	I	L	R	R1	ØK	Metr.	
350	400	25 - 19	1 3/4	BF-L-603-602	19	23	64	82	27,8	23,8	50,8	57,2	68	37	40	14	M10	
350	400	32 - 19	1-1/4 - 3/4	BF-L-604-M14-602	19	30	72	100	31,8	23,8	50,8	66,6	76	41	46	16	M10	
350	400	32 - 25	1-1/4 - 1	BF-L-604-M14-603	23	30	72	100	31,8	27,8	57,2	66,6	76	41	46	16	M12	
350	400	38 - 32	1-1/2 - 1-1/4	BF-L-605-604M14	30	38	89	114	36,5	31,8	66,6	79,3	86	50	52	18	M14	
350	400	51 - 38	2 - 1-1/2	BF-L-606-605	38	50	107	133	44,5	36,5	79,3	96,8	107	64	70	22	M16	

¹ The maximum working pressure applies only to the flange itself and depends on the bolts used (Grade 8.8 / 10.9).